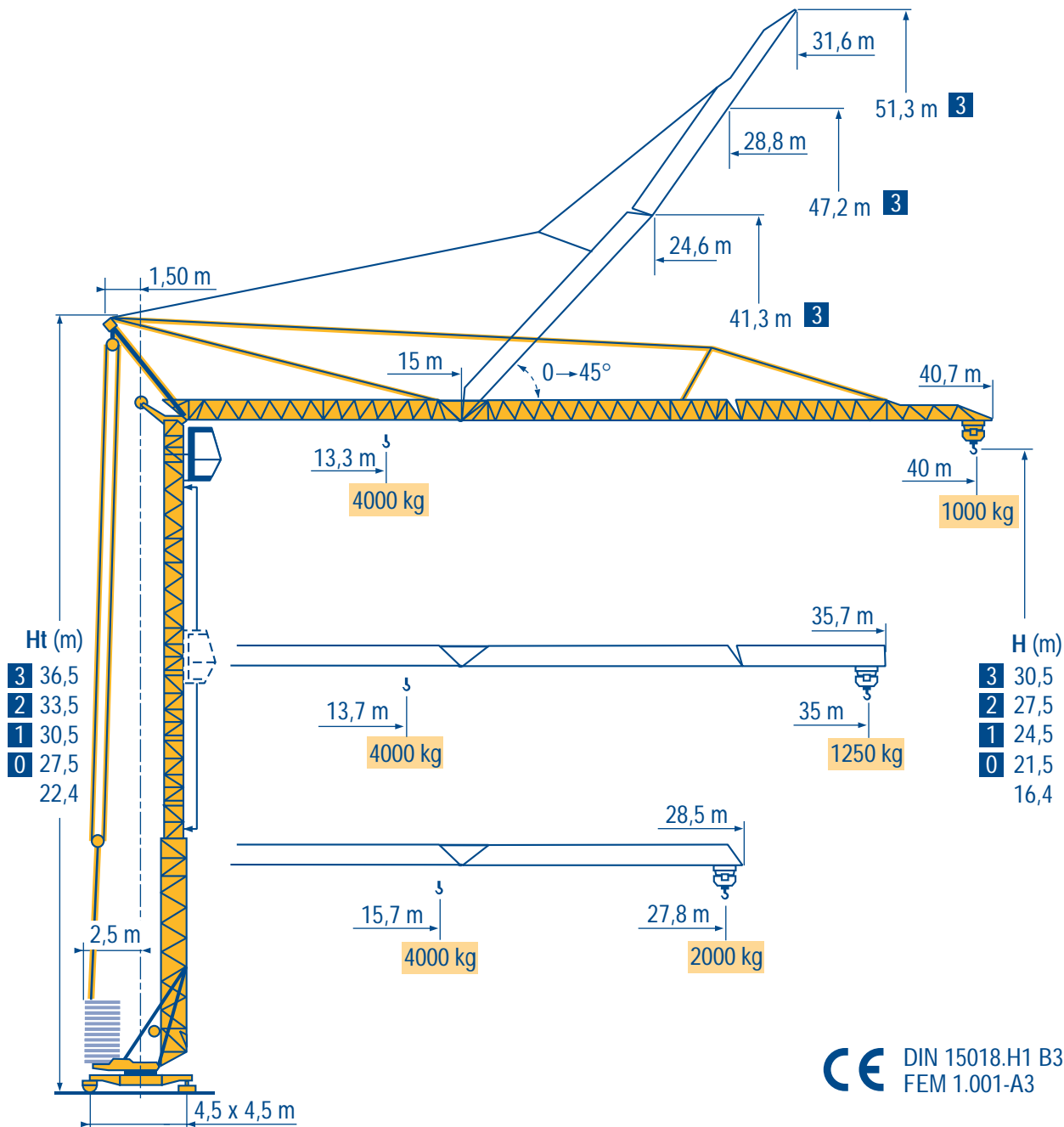


GTMR 336 A



- HD
- HDT
- GTMR
- CITY CRANE
- TOPKIT MD
- MR
- MAXI MD
- MAXI TOPKIT

CE DIN 15018.H1 B3
FEM 1.001-A3

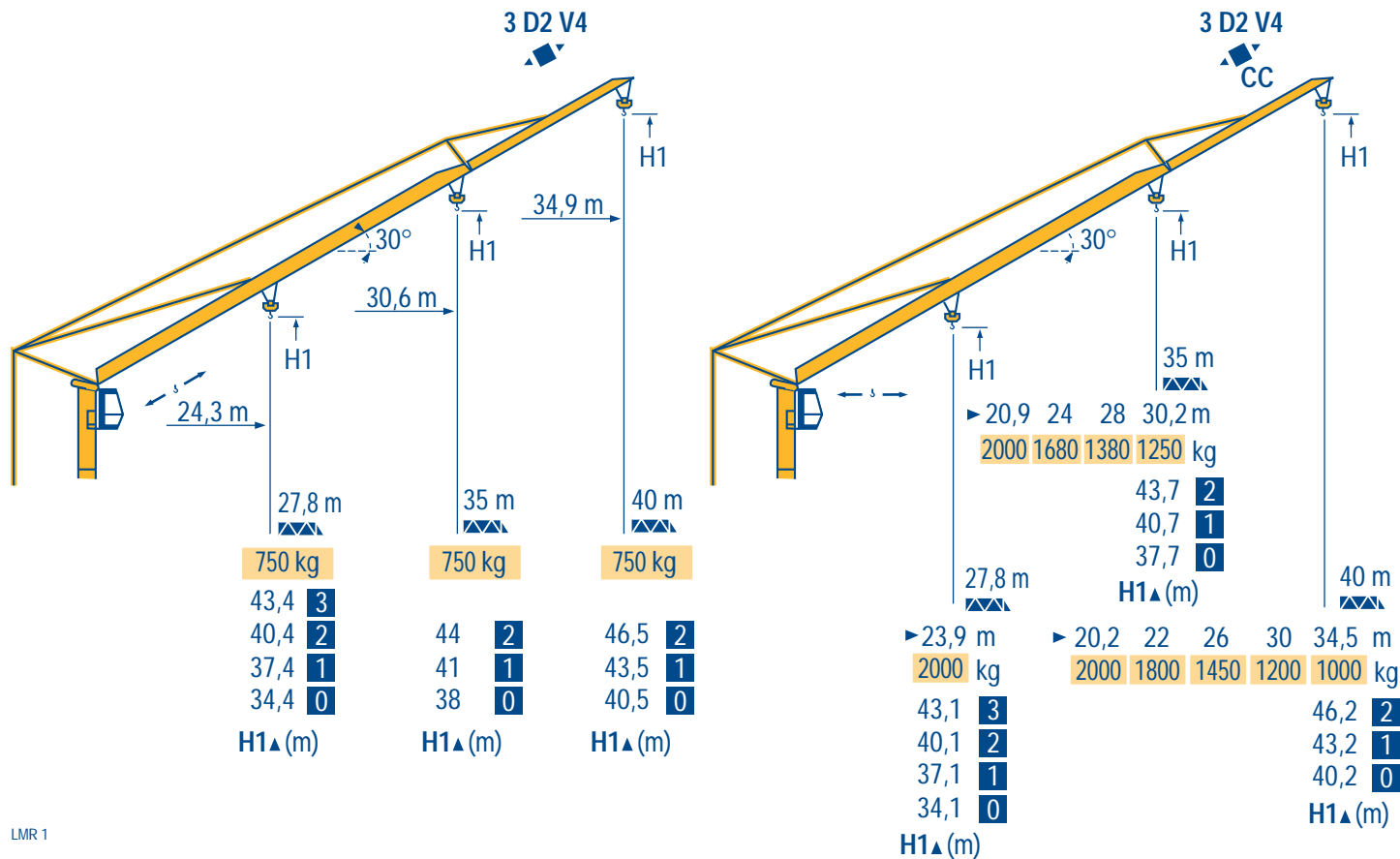


40 m	3 ▶	13,3	14	16	18	20	22	24	26	28	30	32	34	36	38	40	m
▲▲		4000	3740	3170	2740	2400	2140	1920	1740	1580	1450	1340	1240	1150	1070	1000	kg

35 m	3 ▶	13,7	14	16	18	20	22	24	26	28	30	32	34	35	m
▲▲		4000	3910	3310	2870	2520	2240	2010	1820	1660	1520	1400	1300	1250	kg

27,8 m	3 ▶	15,7	18	20	22	24	26	27,8	m
▲▲		4000	3390	2980	2660	2390	2170	2000	kg

LMR 1



LMR 1

Chariot distributeur
Chariot distributeur
et courbes de charges

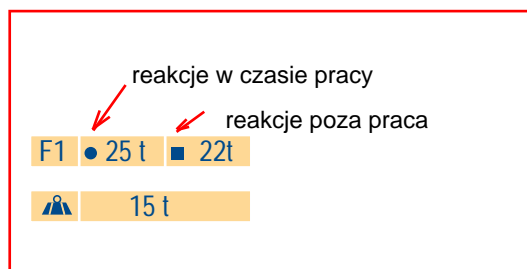
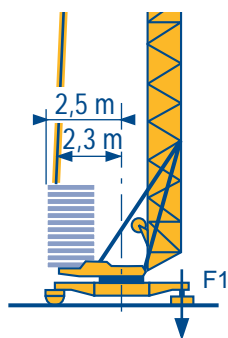
Traversing trolley
Traversing trolley
and load diagrams

Carrellino distributore
Carrellino distributore
e curve di carico

Verfahrbare Laufkatze
Verfahrbare Laufkatze
und Lastkurven

Carro distribuidor
Carro distribuidor
y curvas de cargas

变幅小车
变副滑车和
负荷曲线



LMR 1

<ul style="list-style-type: none"> ● Réactions en service ■ Réactions hors service 🚚 A vide sans lest ni train de transport avec flèche et hauteur maximum 	F	<ul style="list-style-type: none"> ● Reactions in service ■ Reactions out of service Without load, ballast or transport axles, with maximum jib and maximum height. 	GB	<ul style="list-style-type: none"> ● Reazioni in servizio ■ Reazioni fuori servizio A vuoto, senza zavorra ne assali di trasporto con braccio massimo e altezza massima 	I
<ul style="list-style-type: none"> ● Reaktionskräfte in Betrieb ■ Reaktionskräfte außer Betrieb 🚚 Ohne Last, Ballast und Transportachse, mit Maximalausleger und Maximalhöhe. 	D	<ul style="list-style-type: none"> ● Reacciones en servicio ■ Reacciones fuera de servicio Sin carga, sin lastre, ni tren de transporte, flecha y altura máxima. 	E	<ul style="list-style-type: none"> ● 工作状态下的反应 ■ 非工作状态下的反应 🚚 空载无压重也无运输车有吊臂和最大高度 	C

Mécanismes
Antriebe

F Mechanisms
D Mecanismos

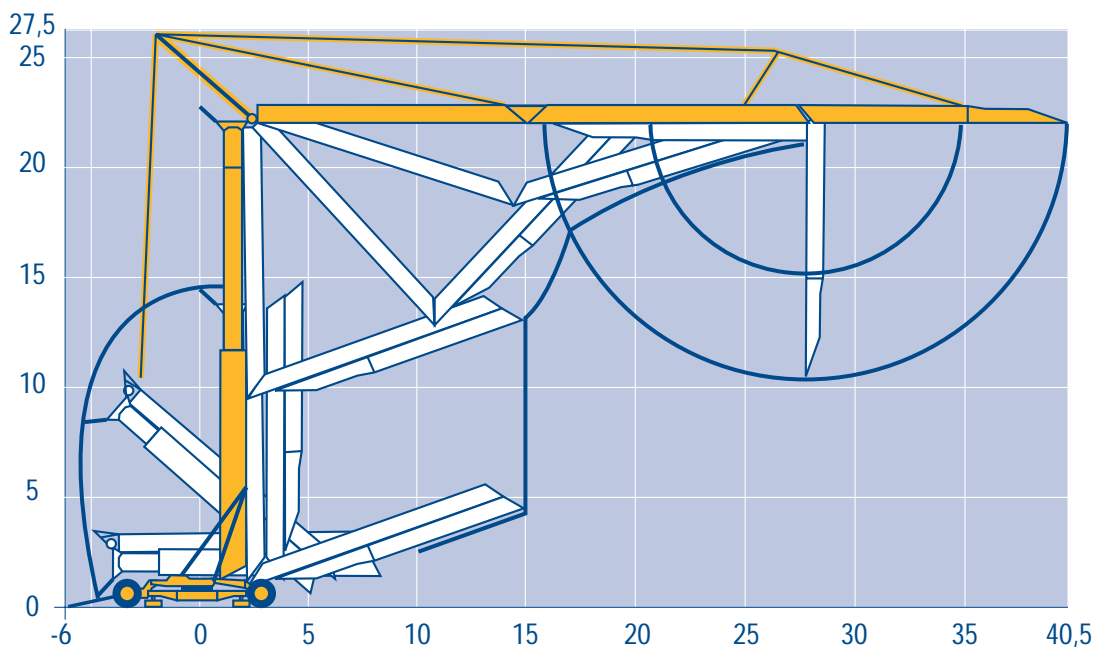
GB Meccanismi
E 机构

		🚚			🚚			ch - PS hp	kW	
		🐢	🐢	🐇	🐢	🐢	🐇			
⬆️	20 TDPC 10	m/min	8	25	50	4	12,5	25	20	15
		kg	2000	2000	1300	4000	4000	2600		
⬆️	20 LVF 10	m/min	5	25	50	2,5	12,5	25	20	15
		kg	2000	2000	1300	4000	4000	2600		
◀▶	3 D2 V4	m/min	22 - 44						4	3
🔄	RCV 32	tr/min U/min rpm	0 → 0,8						4	3
🚚	TVD 122	m/min	25						2 x 2	2 x 1,5
	TB 122	m/min	25						2 x 2	2 x 1,5

CEI 38	🔌 IEC 38	kVA	👂
400 V (+6% -10%) 50 Hz		25 kVA	84/534 - 87/405

LMR 1

<ul style="list-style-type: none"> ⬆️ Levage ◀▶ Distribution 🔄 Orientation 🚚 Translation 👂 Conforme aux directives CEE 84/534 et 87/405 sur le niveau acoustique 	F	<ul style="list-style-type: none"> Hoisting Trolleying Slewing Travelling In compliance with the EEC 84/534 and 87/405 Instructions on noise level 	GB	<ul style="list-style-type: none"> Sollevamento Distribuzione Rotazione Traslazione Conforme alle direttive CEE 84/534 e 87/405 sul livello acustico 	I
<ul style="list-style-type: none"> ⬆️ Heben ◀▶ Katzfahren 🔄 Schwenken 🚚 Kranfahren 👂 Gemäss EWG-Richtlinien 84/534 und 87/405 für den Schall-Leistungspegel 	D	<ul style="list-style-type: none"> Elevación Distribución Orientación Traslación Conforme con las directivas CEE 84/534 y 87/405 sobre el nivel acustico 	E	<ul style="list-style-type: none"> 起升 变幅 回转 行走 符合 CEE 84/534 - CEE 87/405 声响度规定 	C



修改在我方

Modifiche riservate

Modificaciones reservadas

Transport
Transport

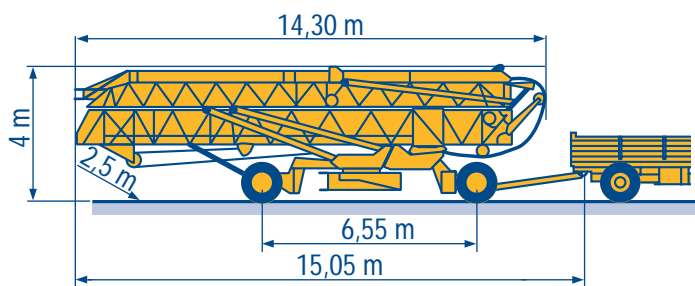
F
D

Transport
Transporte

GB
E

Trasporto
运输

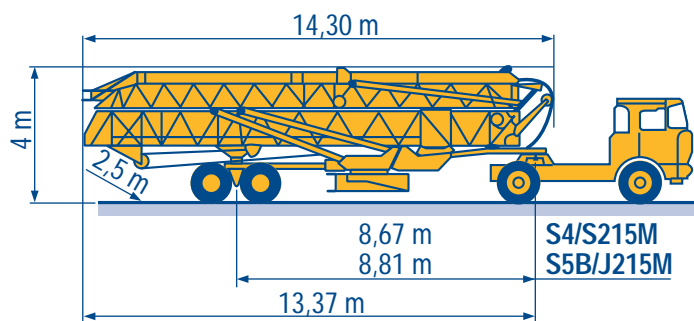
I
C



15A/25A

DJ126M/S215M

CJ125M/J215M



S4/S215M

S5B/J215M

Subject to modification

Änderungen vorbehalten

Modifications réservées

Printed in France

Réalisation SODIPE

POTAIN 
 GROUPE LEGRIS INDUSTRIES

18.Rue de Charbonnières, B.P. 173-F
 69132 ECULLY Cedex
 Tél. (33)04.72.20.20.20
 Fax (33)04.72.20.20.00
 http://www.potain.fr
 E-mail : mkt@potain.fr

GTMR 336 A

Copyright.Reproduction interdite © POTAIN 1997

Deutschland
 POTAIN GmbH Tel : 06.105.704.0
Italia
 POTAIN S.p.A. Tel : 039.65.631
China
 Zhangjiagang POTAIN Tel : 520. 877.1451