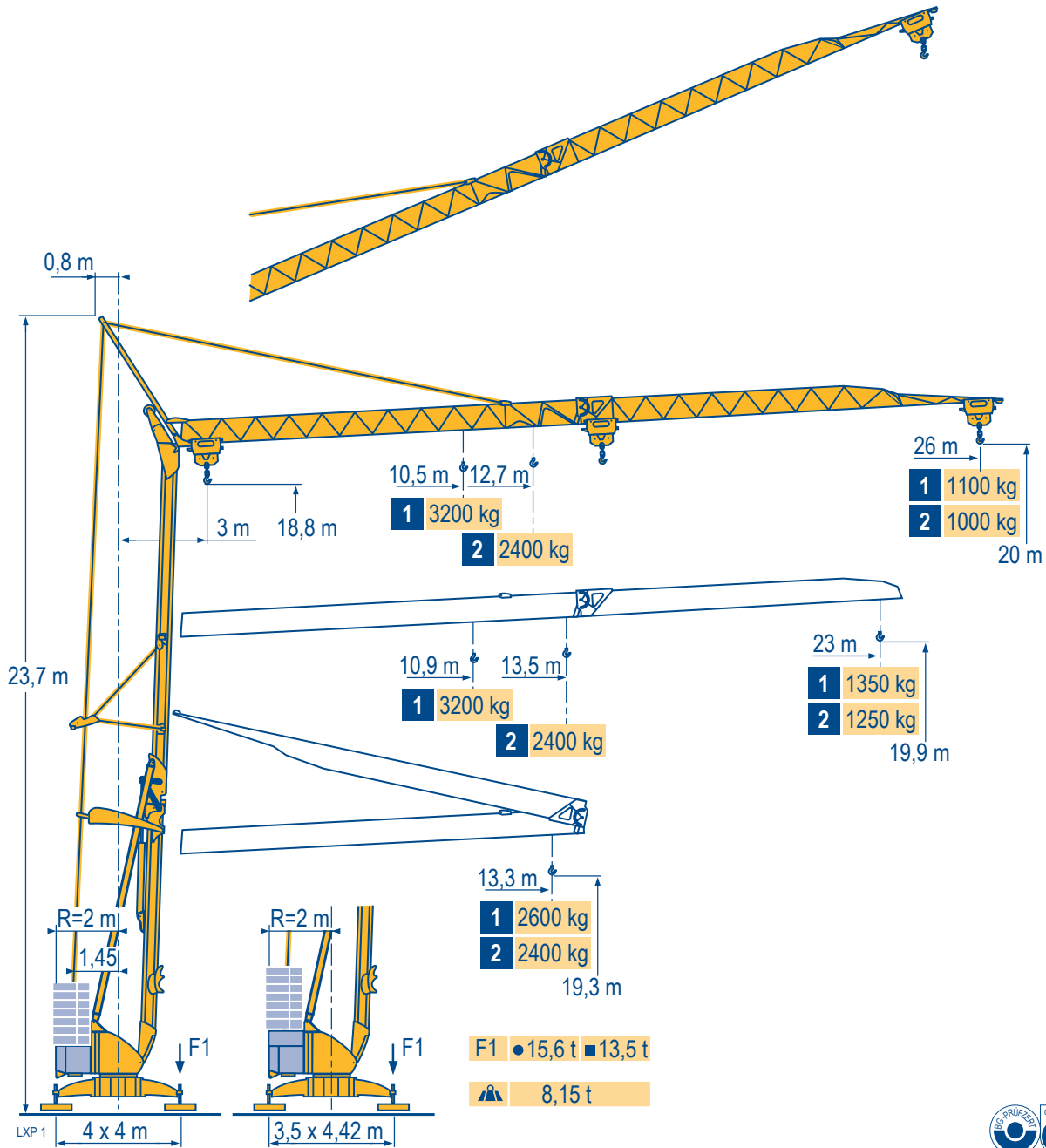
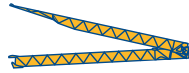


Igo 26



Courbes de charges
Lastkurven
Load diagrams
Curvas de cargas



1 3200 kg

Curve di carico
Curva de cargas

26 m	3	▶11,3	12	13,3 m
▲▲▲	▲▲	▲	▲	▲
				3200 2960 2600 kg

10,5	11	12	13	14	15	16	17	18	19	20	21	22	23	24	25	26 m
3200	2990	2680	2420	2200	2020	1860	1725	1605	1495	1405	1320	1240	1175	1110	1055	1000 kg

1600 1515 1425 1350 1275 1215 1155 1100 kg

LXP 1

23 m	3	▶11,3	12	13,3 m
▲▲▲	▲▲	▲	▲	▲
				3200 2960 2600 kg

10,9	11	12	13	14	15	16	17	18	19	20	21	22	23 m
3200	3170	2840	2565	2335	2140	1975	1830	1705	1590	1495	1405	1325	1250 kg

1600 1505 1425 1350 kg

2 2400 kg

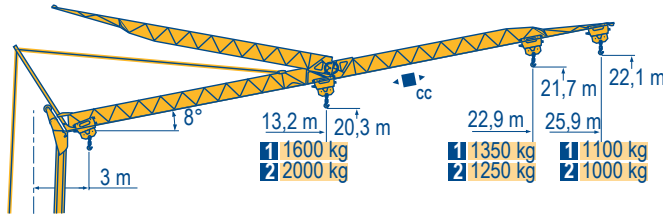
26 m	3	▶	13,3 m
▲▲▲	▲▲	▲	▲
			2400 kg

12,7	13	14	15	16	17	18	19	20	21	22	23	24	25	26 m
2400	2340	2130	1960	1810	1680	1570	1470	1380	1300	1230	1165	1105	1050	1000 kg

23 m	3	▶	13,3 m
▲▲▲	▲▲	▲	▲
			2400 kg

13,5	14	15	16	17	18	19	20	21	22	23 m
2400	2285	2100	1940	1805	1685	1575	1480	1395	1320	1250 kg

Flèche relevée
Ausleger in Steilstellung
Luffing jib
Flecha izada
Braccio impennato
Lança inclinada



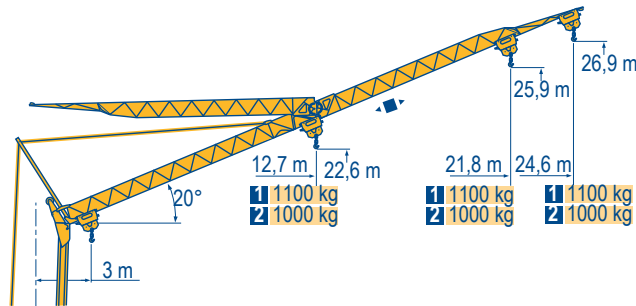
1	26 m	3	▶	18	19	20	21	22	23	24	25	25,9 m
▲▲▲	▲▲	▲	▲	▲	▲	▲	▲	▲	▲	▲	▲	▲
				1600	1490	1395	1310	1235	1165	1105	1045	1000 kg
				1600	1510	1420	1340	1270	1210	1150	1100 kg	

23 m	3	▶	18,9	19	19,9	20	21	22	22,9 m
▲▲▲	▲▲	▲	▲	▲	▲	▲	▲	▲	▲
			1600	1585	-	1485	1395	1315	1250 kg
				1600	1590	1500	1415	1350 kg	

2	26 m	3	▶	14,7	16	19	21	22	23	24	25	25,9 m
▲▲▲	▲▲	▲	▲	▲	▲	▲	▲	▲	▲	▲	▲	▲
				2000	1800	1460	1295	1225	1160	1100	1045	1000 kg

23 m	3	▶	15,5	16	19	20	21	22	22,9 m
▲▲▲	▲▲	▲	▲	▲	▲	▲	▲	▲	▲
			2000	1930	1570	1475	1390	1310	1250 kg

LXP 1



1	26 m	3	▶	24,6 m
▲▲▲	▲▲	▲	▲	▲
				1000 kg
				1100 kg

23 m	3	▶	21,8 m
▲▲▲	▲▲	▲	▲
			1000 kg
			1100 kg

2	26 m	3	▶	24,6 m
▲▲▲	▲▲	▲	▲	▲
				1000 kg

23 m	3	▶	21,8 m
▲▲▲	▲▲	▲	▲
			1000 kg

Igo 26



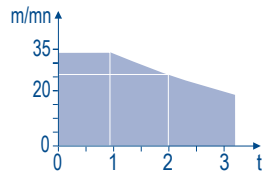
F	D	GB	E	I	P
Chariot distributeur	Verfahrbare Laufkatze	Traversing trolley	Carro distribuidor	Carrellino distributore	Carro distribuidor
Chariot distributeur et courbes de charges	Verfahrbare Laufkatze und Lastkurven	Traversing trolley and load diagrams	Carro distribuidor y curvas de cargas	Carrellino distributore e curve di carico	Carro distribuidor e curva de cargas
● Réactions en service	● Reaktionskräfte in Betrieb	● Reactions in service	● Reacciones en servicio	● Reazioni in servizio	● Reações em serviço
■ Réactions hors service	■ Reaktionskräfte außer Betrieb	■ Reactions out of service	■ Reacciones fuera de servicio	■ Reazioni fuori servizio	■ Reações fora de serviço
A vide sans lest (ni train de transport) avec flèche et hauteur maximum.	Ohne Last, Ballast (und Transportachse), mit Maximalausleger und Maximalhöhe.	Without load, ballast (or transport axes), with maximum jib and maximum height.	Sin carga, sin lastre, (ni tren de transporte), flecha y altura máxima.	A vuoto, senza zavorra (ne assali di trasporto) con braccio massimo e altezza massima.	Sem carga (nem trem de transporte)- sem lastro com lança e altura máximas.

Mécanismes
Antriebe
Mechanisms
Mecanismos
Meccanismi
Mecanismos

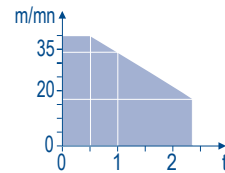
LXP 2

												ch - PS hp	kW		
	15 LVF 10 Optima	m/min	3,6	18	37	49	66						15	11	
		kg	1600	1600	1600	1100	500								
		m/min	3,6	18	37	54	66	1,8	9	19	27	33			
		kg	1600	1600	1600	1000	500	3200	3200	3200	2000	1000			
	3 DVF5	m/min	19 - 41									3	2,2		
	10 LVF 12 Optima	m/min	2	10	17	34	40						10	7,5	
		kg	2400	2400	2400	1000	500								
	2 DVF5	m/min	15 - 38 (0 → 1000 kg)			15 - 30 (1000 → 2400 kg)					2	1,5			
	RVF2	tr/min U/min rpm	0 → 0,8									2	1,5		
CEI 38						IEC 38						kVA			
400 V (+6% -10%) 50 Hz												15 LVF 10 : 20 kVA 10 LVF 12 : 14 kVA			

15 LVF 10
Optima

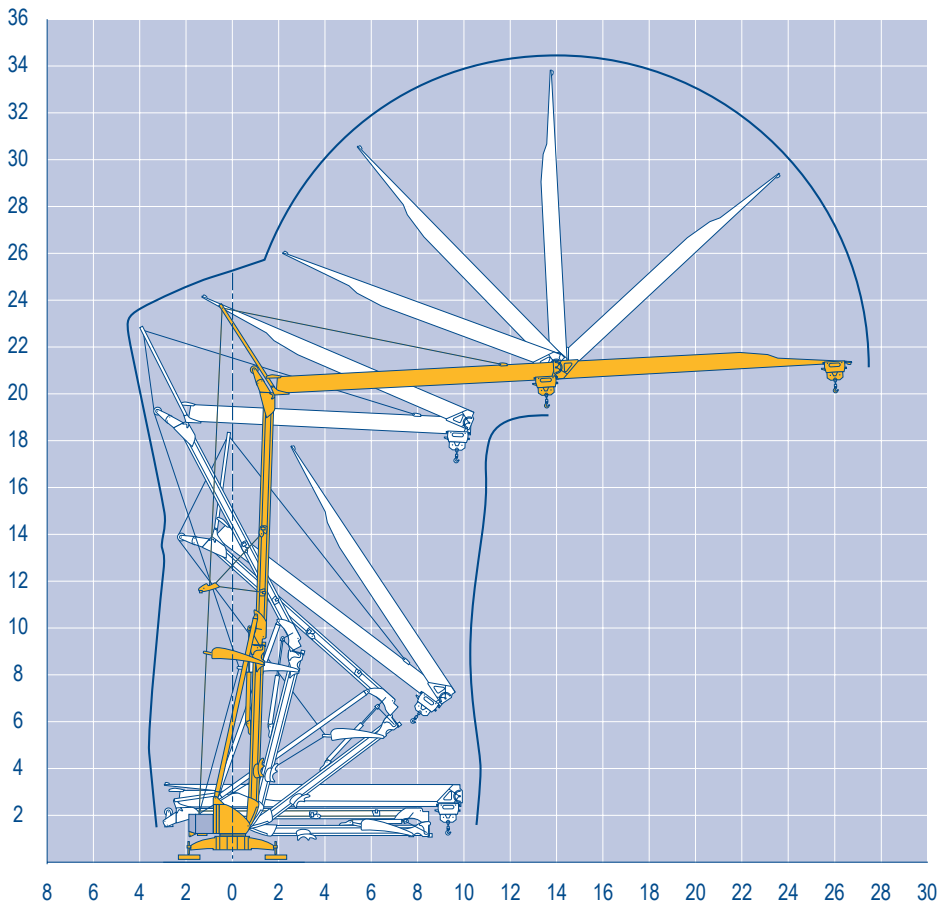


10 LVF 12
Optima



Montage
Montage
Erection
Montaje
Montaggio
Montagem

LXP 1



Igo 26

8 6 4 2 0 2 4 6 8 10 12 14 16 18 20 22 24 26 28 30

POTAIN



F
Levage
Distribution
Orientation

D
Heben
Katzfahren
Schwenken

GB
Hoisting
Trolleying
Slewing

E
Elevación
Distribución
Orientación

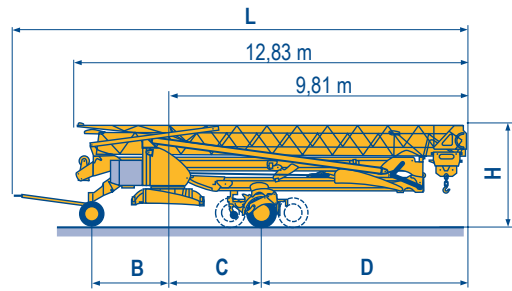
I
Sollevamento
Distribuzione
Rotazione

P
Elevação
Distribuição
Rotação

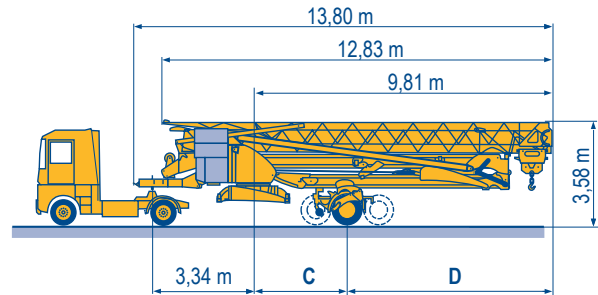
Transport
Transport
Transport
Trasporto
Transporte

LXP 2

		L (m)	B (m)	C (m)	D (m)	H (m)
DS61/S120	○					
DS61/S125	DS61/S120	14,9	2,45	3	6,81	3,05/3,2
DJ80/S120	○					
DJ80/S125	DS61/S125	14,9	2,45	3	6,81	3,05/3,2
DJ100/S120	DJ80/S120	14,9	2,45	3	6,81	3,1
DJ100/S125	DJ80/S125	14,9	2,45	3	6,81	3,1
DJ105/S125	DJ100/S120	15,33	2,45	3	6,81	3,1/3,23
DJ126M/S125	DJ105/S125	15,33	2,45	3	6,81	3,1/3,23
DJ126M/S215M	DJ126M/S125	15,35	2,45	3	6,81	3,2
	DJ126M/S215M	16,14	3,24	5,37	4,44	3,55



		C (m)	D (m)
SL122/J215M			
SL121/J135	SL122/J215M	5,37	4,44
SL121/S215M	SL121/J135	3	6,81
	SL121/S215M	5,37	4,44



	F	D	GB	E	I	P
○	Chantier	Baustelle	Site	Obra	Cantiere	Estaleiro



Document commercial non contractuel. Pour toute information technique se référer à la notice correspondante.

Unverbindliches Vertriebsdokument. Für technische Informationen, siehe die entsprechenden Anweisungen.

This commercial document is not legally binding. For any technical information, please refer to the corresponding instructions.

Documento comercial non contractuel. Para cualquier información técnica, ver la noticia correspondiente.

Documento commerciale non vincolante, per tutte le informazioni tecniche fare riferimento al catalogo istruzioni.

Documento comercial não contratual. Para qualquer informação técnica complementar consultar as respectivas instruções.



18, rue de Charbonnières - B.R.173
69132 ECULLY Cedex - France

Tél. : +33 (0) 4 72 18 20 20
Fax. : +33 (0) 4 72 18 20 00
www.manitowoccrane.com



Americas
Tel : +1 888 479 7278
Tel : +1 717 593 2000

Europe - Middle East - Africa
Tel : +33 (0) 4 72 81 50 00
Tel : +44 (0) 191 522 2000

Asia - Pacific
Tel : +65 6264 1188
Fax : +65 6862 4040

www.manitowoccrane.com

Igo 26

Code U-91985-46_Réf. 2003 48 LXP 4

Copyright.Reproduction interdite © POTAIN 2003

Réalisation Secdoc