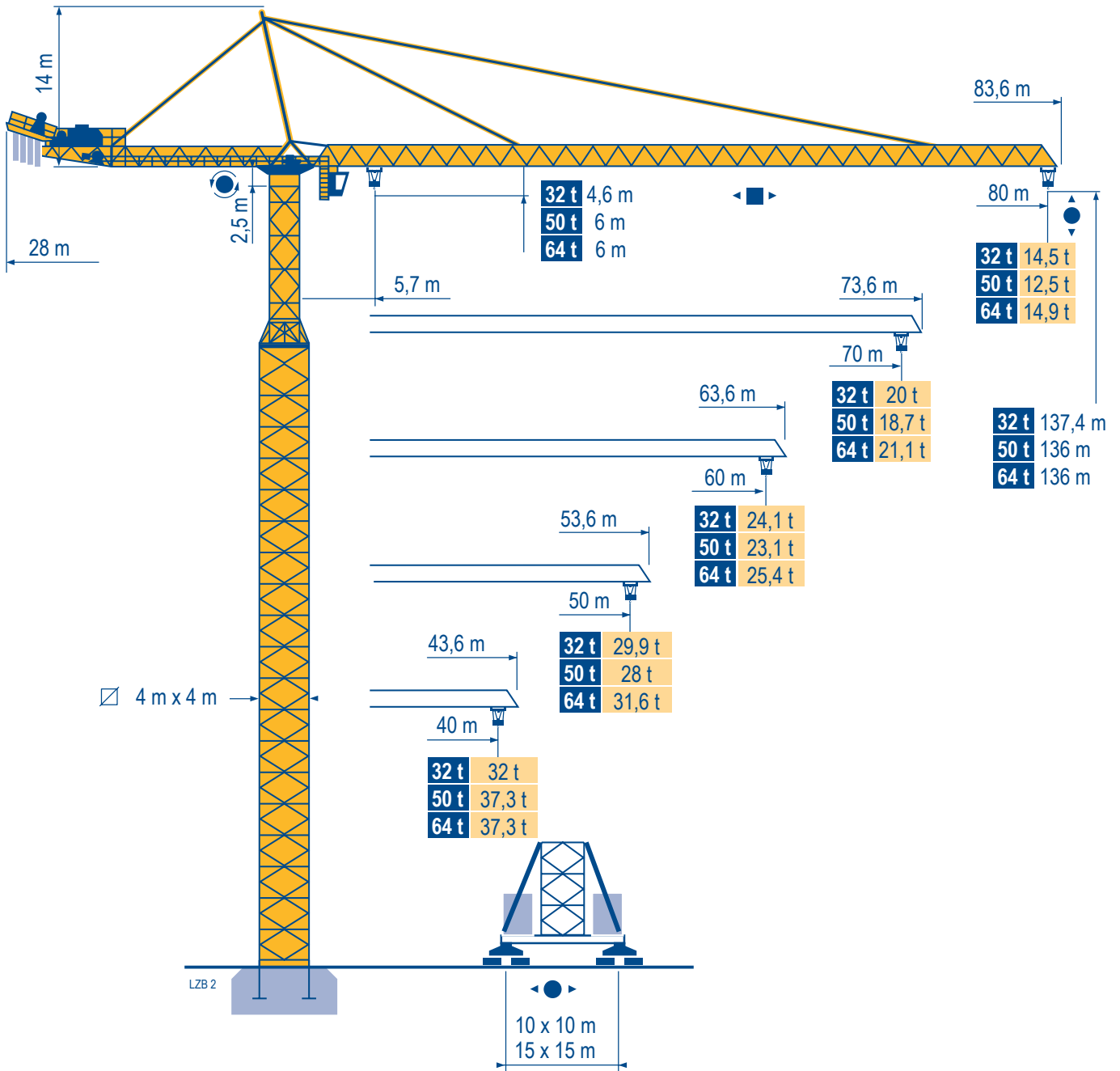


MD 1400



Mat / Réactions 4 m x 4 m

Maste /
Eckdrücke

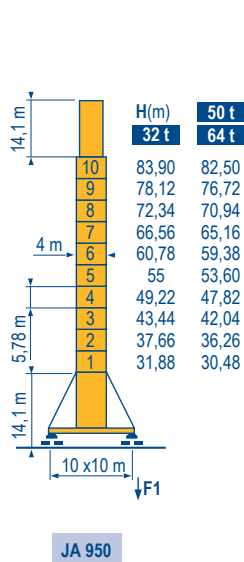
Masts /
Reactions

Mástil /
Reacciones

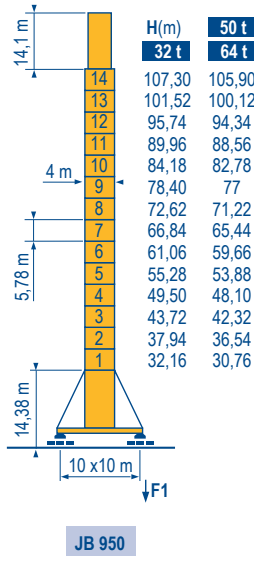
Torre / Reazioni

Tramo /
Reacções

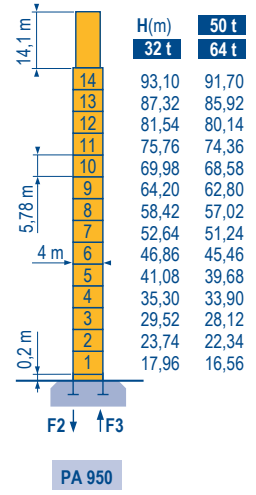
L2B 3



F1	32 t	● 242 t	■ 210 t
	50 t	● 246 t	■ 210 t
	64 t	● 250 t	■ 210 t



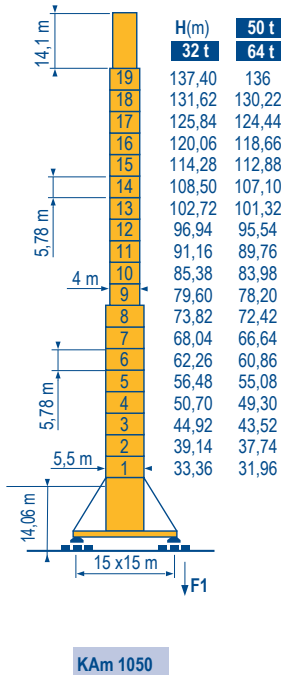
F1	32 t	● 288 t	■ 278 t
	50 t	● 292 t	■ 278 t
	64 t	● 296 t	■ 278 t



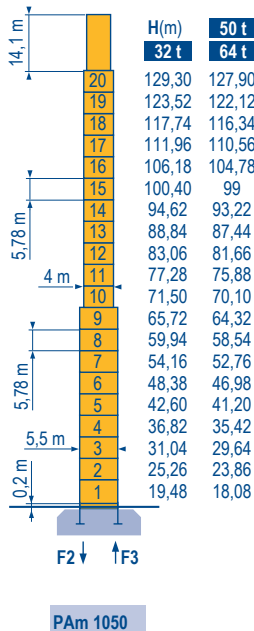
F2	32 t	● 380 t	■ 287 t
	50 t	● 384 t	■ 287 t
	64 t	● 388 t	■ 287 t

F3	32 t	● 206 t	■ 129 t
	50 t	● 201 t	■ 129 t
	64 t	● 198 t	■ 129 t

4 m x 4 m
5,5 m x 5,5 m



F1	32 t	● 292 t	■ 395 t
	50 t	● 296 t	■ 395 t
	64 t	● 300 t	■ 395 t



MD 1400

POTAIN



F

Réactions en service

Réactions hors service

A vide sans lest (ni train de transport) avec flèche et hauteur maximum.

D

Reaktionskräfte in Betrieb

Reaktionskräfte außer Betrieb

Ohne Last, Ballast (und Transportachse), mit Maximalausleger und Maximalhöhe.

GB

Reactions in service

Reactions out of service

Without load, ballast (or transport axles), with maximum jib and maximum height.

E

Reacciones en servicio

Reacciones fuera de servicio

Sin carga, sin lastre, (ni tren de transporte), flecha y altura máxima.

I

Reazioni in servizio

Reazioni fuori servizio

A vuoto, senza zavorra (ne assali di trasporto) con braccio massimo e altezza massima.

P

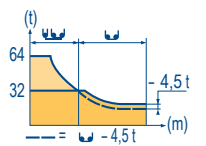
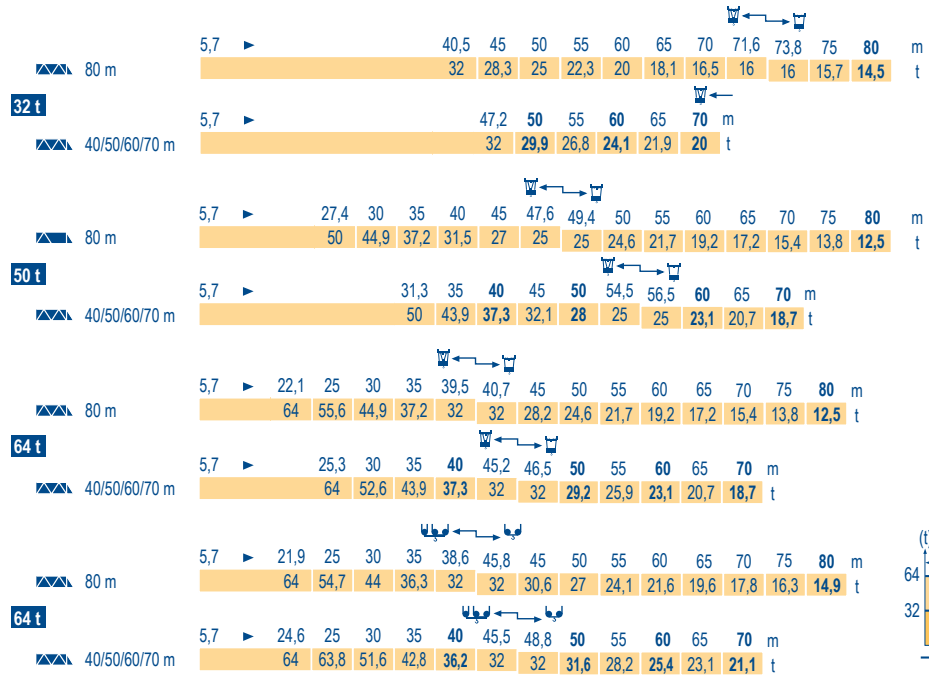
Reacções em serviço

Reacções fora de serviço

A vuoto, senza zavorra (ne assali di transporte)- sem lastro com lança e altura máximas.

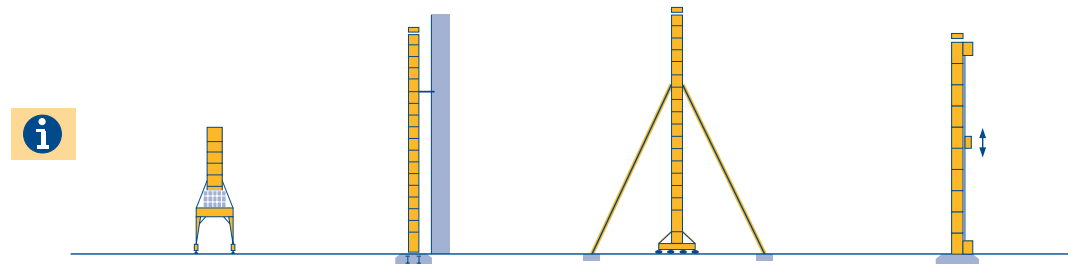
Courbes de charges
 Lastkurven
 Load diagrams
 Curvas de cargas
 Curve di carico
 Curva de cargas

LZB 2



Autres implantations
 Aufstellmöglichkeiten
 Mounting possibilities
 Outras implantaciones
 Altre postazioni
 Outras implantações

LZB 1



MD 1400



	F	D	GB	E	I	P
	Nous consulter	Auf Anfrage	Consult us	Consultarnos	Consultateci	Consultar-nos

Mécanismes
Antriebe
Mechanisms
Mecanismos
Meccanismi
Mecanismos

LZB 3

i			U					UU					ch - PS hp	kW	
▲ ▼	32 t	250 LCC 80	m/min	46 → 68 → 86 → 108 → 122	23 → 34 → 43 → 54 → 61	250	180	620 m							
			t	16 12 8 4 2	32 24 16 6 4										
	50 t	250 LCC 125	m/min	30 → 44 → 56 → 72 → 80	15 → 22 → 28 → 36 → 40	250	180	690 m							
			t	25 18,8 12,5 6,2 3,1	50 37,5 25 12,5 6,25										
◀ ▶	64 t	250 LCC 160	m/min	24 → 34 → 44 → 56 → 62	12 → 17 → 22 → 28 → 31	250	180	440 m							
			t	32 24 16 8 4	64 48 32 16 8										
	32 t	15 DVF 16	m/min	0 → 33 (32 t) - 0 → 50 (16 t) - 0 → 67 (8 t) - 0 → 100 (2 t)					15	11					
	50 t	25 DVF 25	m/min	0 → 33 (50 t) - 0 → 66 (25 t) - 0 → 80 (12,5 t)					25	18					
	64 t	25 DVF 33	m/min	0 → 25 (64 t) - 0 → 50 (32 t)					25	18					
	RVF		tr/min U/min rpm	0 → 0,6					3 x 25	3 x 18,4					
			m/min	0 → 16					16 x 4	16 x 3					
				8,5 - 17					12x 5	12 x 3,7					
CEI 38			IEC 38			kVA									
400 V (+6% -10%) 50 Hz						250 LCC : 340 kVA									

F	D	GB	E	I	P
Leverage	Heben	Hoisting	Elevación	Sollevamento	Elevação
Distribution	Katzfahren	Trolleying	Distribución	Distribuzione	Distribuição
Orientation	Schwenken	Slewing	Orientación	Rotazione	Rotação
Translation	Kranfahren	Travelling	Traslación	Traslazione	Translação

Document commercial non contractuel. Pour toute information technique se référer à la notice correspondante. Unverbindliches Vertriebsdokument. Für technische Informationen, siehe die entsprechenden Anweisungen. This commercial document is not legally binding. For any technical information, please refer to the corresponding instructions. Documento comercial non contractuel. Para cualquier información técnica, ver la noticia correspondiente. Documento commerciale non vincolante, per tutte le informazioni tecniche fare riferimento al catalogo istruzioni. Documento comercial não contratual. Para qualquer informação técnica complementar consultar as respectivas instruções.



18, rue de Charbonnières - B.R.173
69132 ECULLY Cedex - France
Tél. : +33 (0) 4 72 18 20 20
Fax. : +33 (0) 4 72 18 20 00
www.manitowoccrane.com

Americas
Tel : +1 888 479 7278
Tel : +1 717 593 2000

Europe - Middle East - Africa
Tel : +33 (0) 4 72 81 50 00
Tel : +44 (0) 191 522 2000

Asia - Pacific
Tel : +65 6264 1188
Fax : +65 6862 4040

www.manitowoccrane.com

MD 1400
Code D-91985-77_Réf. 2003 48 LZB 4
Copyright.Reproduction interdite © POTAIN 2003

Réalisation Secotec