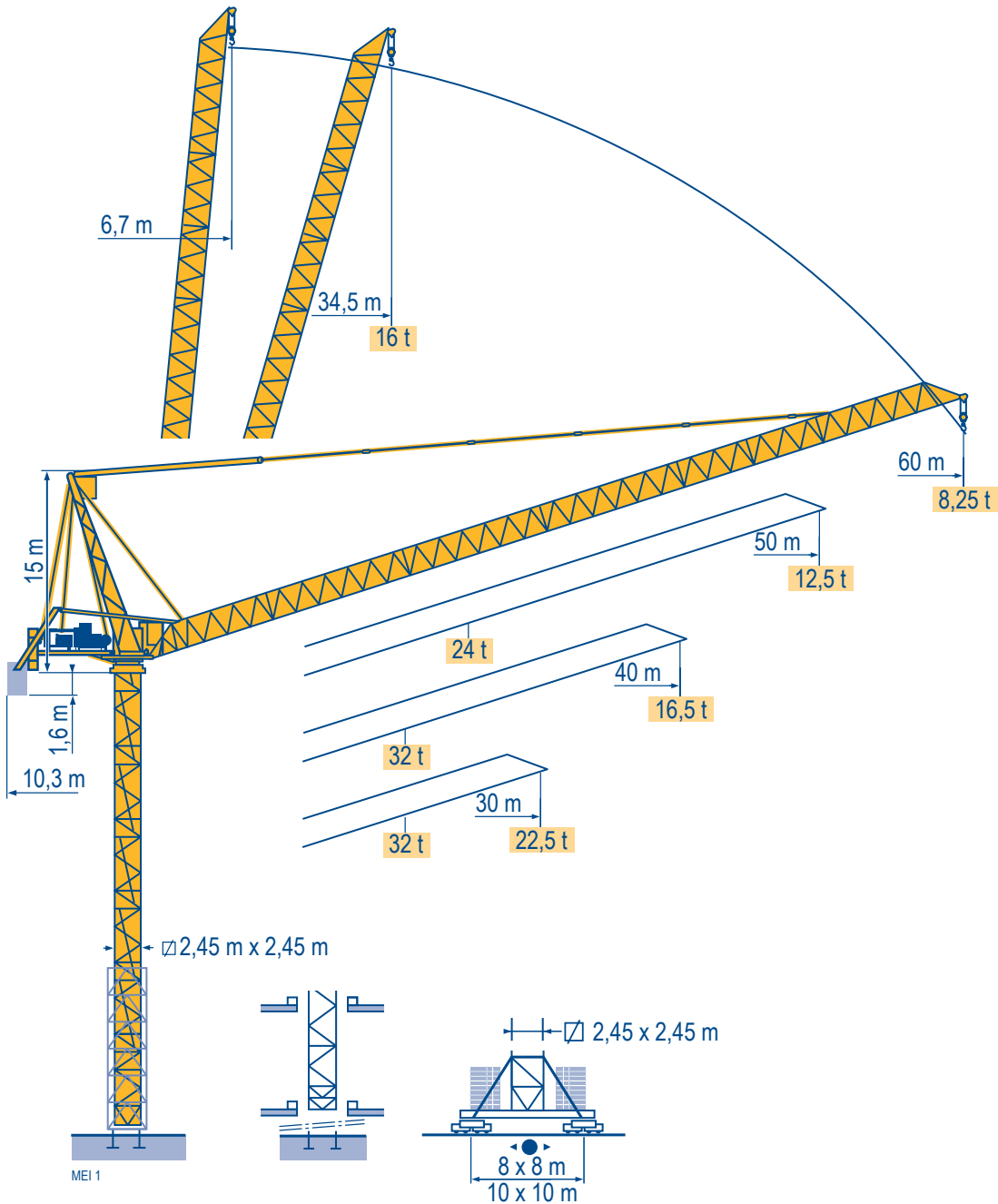
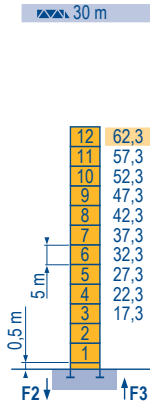


MR 615 H32



Mat / Réactions \square 2,45 m
 Maste /
 Eckdrücke 30 m \Rightarrow 60 m
 Masts /
 Reactions
 Mástil /
 Reacciones
 Torre / Reazioni
 Tramo /
 Reacções

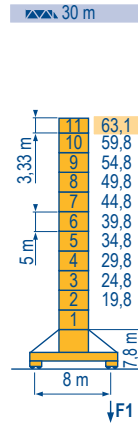
MEI 1



30 m	H (m)	5 m	3,33 m
40 m	59	10	2
50 - 60 m	57,3	11	-

P 800 A

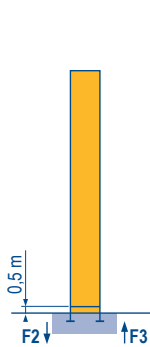
- F2 ● 327 t
- 374 t
- F3 ● 227 t
- 275 t
- ▲ 139 t



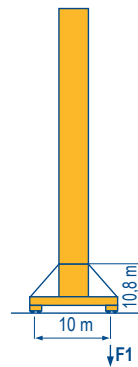
30 m	H (m)	5 m	3,33 m
40 m	58,1	9	1
50 m	56,4	8	2
60 m	58,1	9	1

Y 800 A

- F1 ● 178 t
- 198 t
- ▲ 174 t



P 850 A



J 850 A



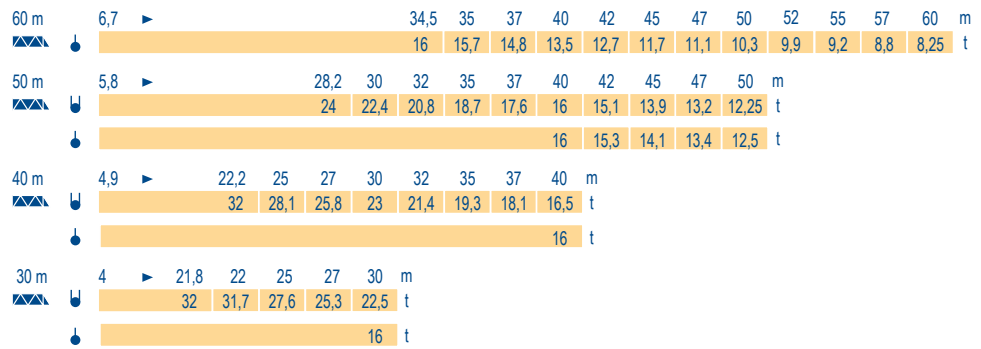
MR 615 H32



F	D	GB	E	I	P
● Réactions en service ■ Réactions hors service ▲ A vide sans lest (ni train de transport) avec flèche et hauteur maximum.	● Reaktionskräfte in Betrieb ■ Reaktionskräfte außer Betrieb ▲ Ohne Last, Ballast (und Transportachse), mit Maximalausleger und Maximalhöhe.	● Reactions in service ■ Reactions out of service ▲ Without load, ballast (or transport axles), with maximum jib and maximum height.	● Reacciones en servicio ■ Reacciones fuera de servicio ▲ Sin carga, sin lastre, (ni tren de transporte), flecha y altura máxima.	● Reazioni in servizio ■ Reazioni fuori servizio ▲ A vuoto, senza zavorra (ne assali di trasporto) con braccio massimo e altezza massima.	● Reacções em serviço ■ Reacções fora de serviço ▲ Sem carga (nem trem de transporte)- sem lastro com lança e altura máximas.
● Nous consulter	● Auf Anfrage	● Consult us	● Consultarnos	● Consultateci	● Consultar-nos

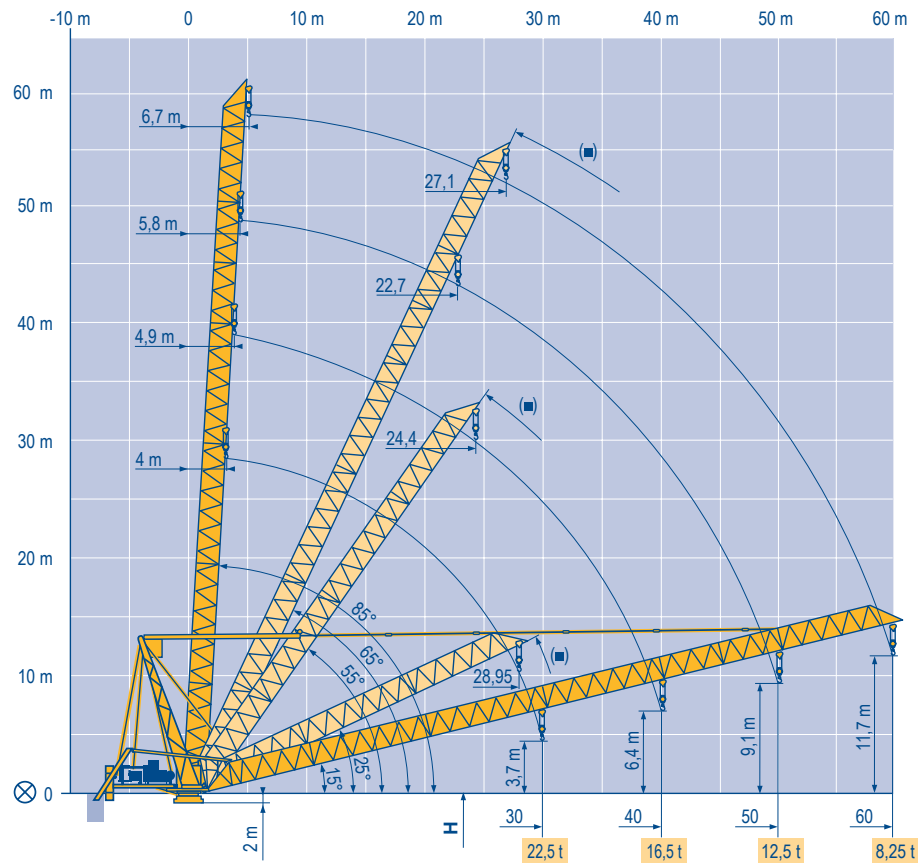
Courbes de charges
 Lastkurven
 Load diagrams
 Curvas de cargas
 Curve di carico
 Curva de cargas

ME1



Flèche relevée
 Ausleger in Steilstellung
 Luffing jib
 Flecha izada
 Braccio impennato
 Lança inclinada

ME12



MR 615 H32

POTAIN



F
 Axe articulation flèche
 Position girouette

D
 Ausleger-gelenkachse
 Windfreistellung

GB
 Jib hinge shaft
 Weathering position

E
 Eje articulación de flecha
 Posición eleta

I
 Asse cerniera braccio
 Libera rotazione

P
 Eixo de articulação da lança
 Posição em catavento

Mécanismes
Antriebe
Mechanisms
Mecanismos
Meccanismi
Mecanismos

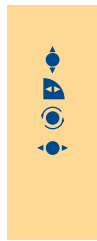
MEI 1

MR 615 H32 50 Hz											ch - PS hp	kW		
	200 LBR 160	m/min t	4,7/47 16	7,7/77 9	12/120 5	20/200 2	2,35/23,5 32	3,85/38,5 18	6/60 10	10/100 4	200	150	670 m	
	180 VBR		1 min 48 s									180	132	
	RVF183 Optima +	tr/min U/min - rpm	0 → 1									3 x 12	3 x 9	
	Y 800 A RT 584 A1 - 2V	m/min	13,5 - 27									8 x 7	8 x 5,2	
	J 850 A	m/min												

CEI 38	IEC 38	kVA
400 V (+6% -10%) 50 Hz		200 LBR 160 : 375 kVA

MR 615 H32 60 Hz											ch - PS hp	kW		
	245 LBR 160	m/min t	5,7/57 16	9,2/92 9	14,4/144 5	24/240 2	2,85/28,5 32	4,6/46 18	7,2/72 10	12/120 4	245	180	670 m	
	215 VBR		1 min 30 s									215	158	
	RVF183 Optima +	tr/min U/min - rpm	0 → 1									3 x 12	3 x 9	
	Y 800 A RT 584 A1 - 2V	m/min	16 - 32									8 x 8,4	8 x 6,2	
	J 850 A	m/min												

CEI 38	IEC 38	kVA
480 V (+6% -10%) 60 Hz		245 LBR 160 : 445 kVA



F

Levage
Relevage
Orientation
Translation

D

Heben
Ausleger-Einziehen
Schwenken
Kranfahren

GB

Hoisting
Luffing
Slewing
Travelling

E

Elevación
Elevación de flecha
Orientación
Traslación

I

Sollevamento
Brandeggio
Rotazione
Traslazione

P

Elevação
Inclinação da lança
Rotação
Translação



Document commercial non contractuel. Pour toute information technique se référer à la notice correspondante.

Unverbindliches Vertriebsdokument. Für technische Informationen, siehe die entsprechenden Anweisungen.

This commercial document is not legally binding. For any technical information, please refer to the corresponding instructions.

Documento comercial non contractuel. Para cualquier información técnica, ver la noticia correspondiente.

Documento commerciale non vincolante, per tutte le informazioni tecniche fare riferimento al catalogo istruzioni.

Documento comercial não contratual. Para qualquer informação técnica complementar consultar as respectivas instruções.



Americas

Tel : +1 888 479 7278
Tel : +1 717 593 2000

Europe - Middle East - Africa

Tel : +33 (0) 4 72 81 50 00
Tel : +44 (0) 191 522 2000

Asia - Pacific

Tel : +65 6264 1188
Fax : +65 6862 4040

www.manitowoccrane.com

18, rue de Charbonnières - B.P.173
69132 ECULLY Cedex - France

Tél. : +33 (0) 4 72 18 20 20
Fax. : +33 (0) 4 72 18 20 00
www.manitowoccrane.com

MR 615 H32

Code P-51983-01_Réf. 2007 06 MEI 2

Copyright.Reproduction interdite © POTAIN 2007