



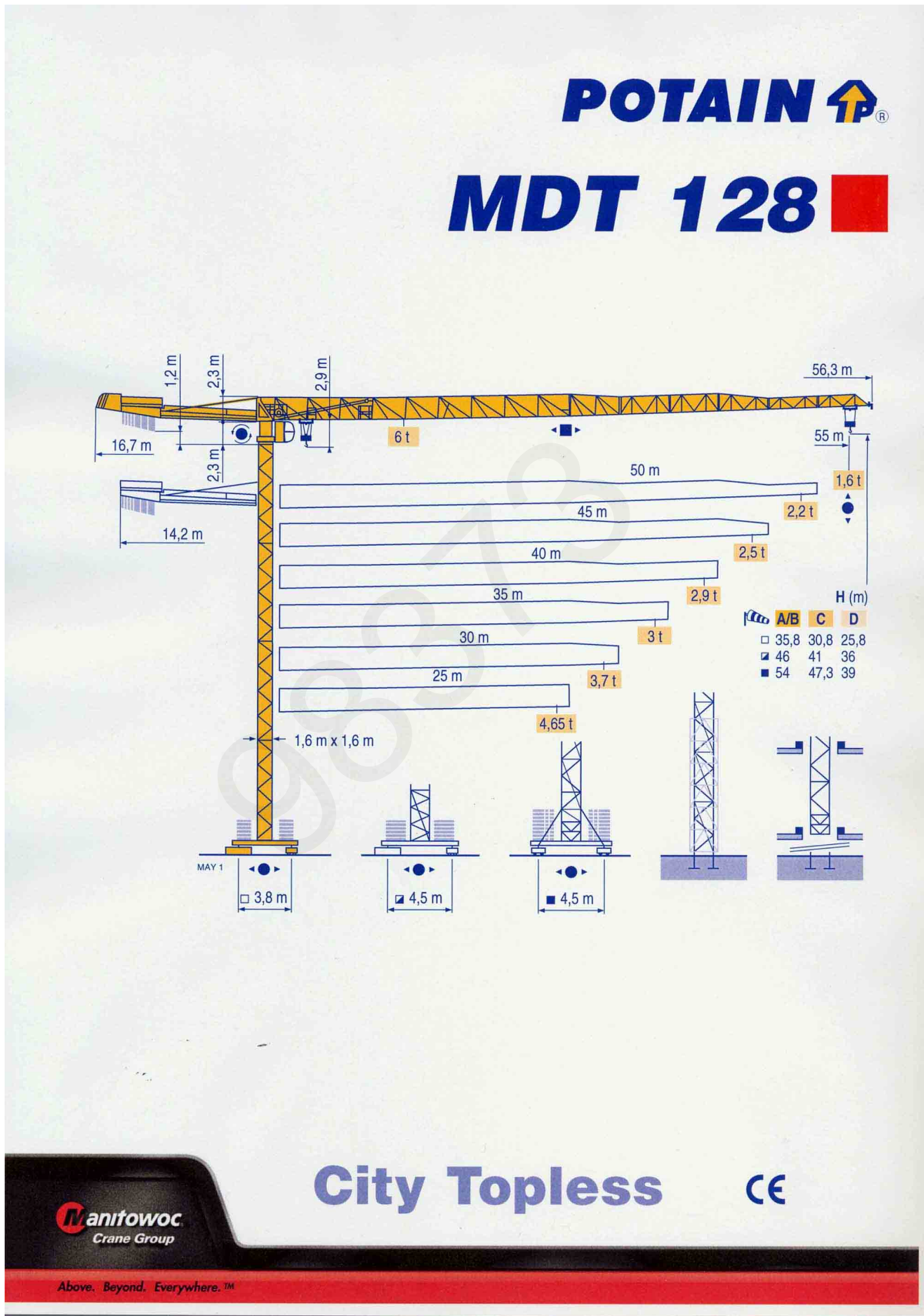
03D – TECHNICAL CHARACTERISTICS	2
1. DATASHEET	2
2. PERMISSIBLE WIND SPEED ACCORDING TO THE SURFACE OF A LIFTED LOAD	6
2. 1. EVALUATION OF A LOAD SURFACE	6
2. 2. TABLES OF PERMISSIBLE MAXIMUM WIND SPEEDS	6

983373



03D – TECHNICAL CHARACTERISTICS

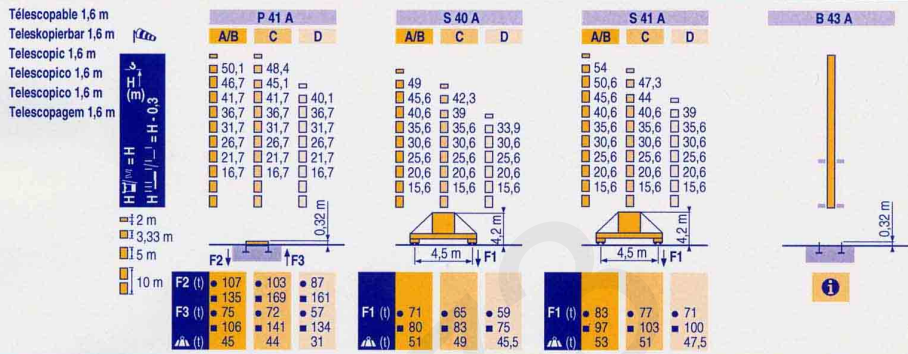
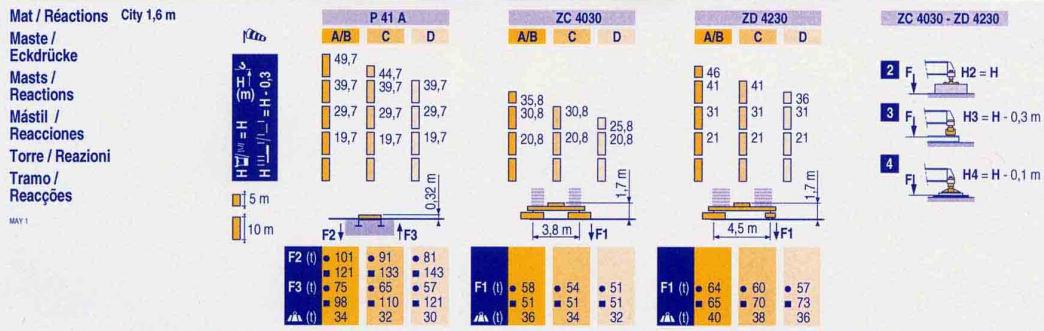
1. DATASHEET



City Topless CE

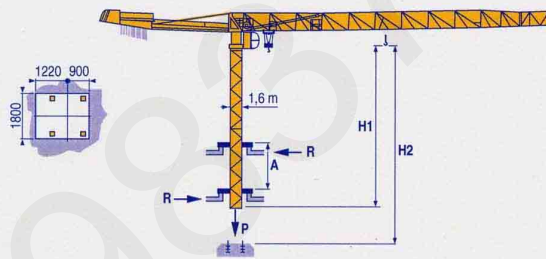
Manitowoc
Crane Group

Above. Beyond. Everywhere.™

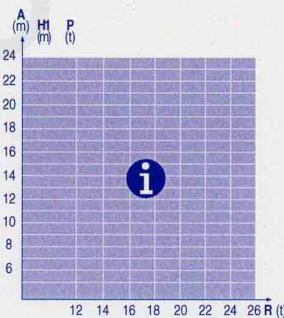


Télescopage sur dalles
Kletterkrane im Gebäude
Climbing crane
Telescopage gruas trepadoras
Gru in cavedio
Telescopagem sobre lages

MAY 1



B 43 A



City Topless
MDT 128

POTAIN

A/B C D	F	D	GB	E	I	P
	Zone géographique d'utilisation de la grue.	Geograph. Einsatzbereich des Krans.	Geographical working area of the crane.	Zona geográfica de utilización de la grúa.	Zona geografica di messa in servizio gru.	Zona geográfica onde a grua é utilizada.
●	Réactions en service	Reaktionskräfte in Betrieb	Reactions in service	Reacciones en servicio	Reazioni in servizio	Reações em serviço
■	Réactions hors service	Reaktionskräfte außer Betrieb	Reactions out of service	Reacciones fuera de servicio	Reazioni fuori servizio	Reações fora de serviço
	A vide sans lest (ni train de transport) avec flèche et hauteur maximum.	Ohne Last, Ballast (und Transportachse), mit Maximalausleger und Maximalhöhe.	Without load, ballast (or transport axes), with maximum jib and maximum height.	Sin carga, sin lastre, (ni tren de transporte), flecha y altura máxima.	A vuoto, senza zavorra (ne assali di trasporto) con braccio massimo e altezza massima.	Sem carga (nem trem de transporte) sem lastro com lança e altura máximas.



Courbes de charges

Lastkurven

Load diagrams

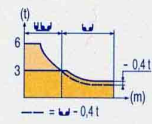
Curvas de cargas

Curve di carico

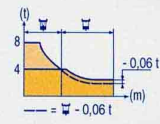
Curva de cargas

MAY 1

55 m	3.1	▶	17,3	20	22	25	27	30,1	33,2	35	37	40	42	45	47	50	52	55 m	
			6	5	4,5	3,8	3,5	3	3	2,8	2,65	2,4	2,25	2,05	1,95	1,8	1,7	1,6 t	
50 m	3.1	▶	20	22	25	27	30	32	35,1	38,7	40	42	45	47	50 m				
			6	5,4	4,6	4,2	3,7	3,4	3	3	2,9	2,7	2,5	2,35	2,2 t				
45 m	3.1	▶	20	22	25	27	30	32	35	38,7	40	42	45 m						
			6	5,4	4,6	4,2	3,7	3,4	3	3	2,9	2,7	2,5 t						
40 m	3.1	▶	20,1	22	25	27	30	32	35,2	38,9	40 m								
			6	5,4	4,6	4,2	3,7	3,4	3	3	2,9 t								
35 m	3.1	▶	20,1	22	25	27	30	32	35 m										
			6	5,4	4,6	4,2	3,7	3,4	3 t										
30 m	3.1	▶	20,2	22	25	27	30 m												
			6	5,4	4,6	4,2	3,7 t												
25 m	3.1	▶	20,2	22	25 m														
			6	5,4	4,65 t														



55 m	2.4	▶	17,5	20	22	25	27	30	31,2	31,7	35	37	40	42	45	47	50	52	55 m	
			6	5,1	4,6	3,9	3,6	3,2	3	3	2,65	2,45	2,25	2,1	1,9	1,8	1,65	1,55	1,45 t	
50 m	2.4	▶	20,4	22	25	27	30	32	35	36,4	37	40	42	45	47	50 m				
			6	5,5	4,7	4,3	3,8	3,5	3,2	3	3	2,75	2,55	2,35	2,2	2,05 t				
45 m	2.4	▶	20,4	22	25	27	30	32	35	36,4	37	40	42	45 m						
			6	5,5	4,7	4,3	3,8	3,5	3,2	3	3	2,75	2,55	2,35 t						
40 m	2.4	▶	20,6	22	25	27	30	32	35	36,7	37,3	40 m								
			6	5,5	4,8	4,4	3,8	3,6	3,2	3	3	2,75 t								
35 m	2.4	▶	20,6	22	25	27	30	32	35 m											
			6	5,6	4,8	4,4	3,9	3,6	3,2 t											
30 m	2.4	▶	20,6	22	25	27	30 m													
			6	5,6	4,8	4,4	3,8 t													
25 m	2.4	▶	20,6	22	25 m															
			6	5,6	4,8 t															



Lest de contre-flèche
Gegenauslegerballast
Counter-jib ballast
Lastre de contra flecha
Contrappeso
Lastros da contra lança

MAY 1

	1 100 kg - 3 600 kg	
		(kg)
55 m	16,7 m	12 700
50 m	14,2 m	12 700
45 m	14,2 m	11 600
40 m	14,2 m	10 500
35 m	14,2 m	9 400
30 m	14,2 m	9 400
25 m	14,2 m	8 300

Lest de base

Grundballast

Base ballast

Lastre de base

Zavorra di base

Lastros da base

MAY 1

1,6 m	ZC 4030	•●-	H (m)	35,8	30,8	25,8	20,8	10,8									
	A/B		(t)	70	65	65	60	55									
	C		(t)	-	70	65	60	55									
	D		(t)	-	-	70	60	55									
1,6 m	ZD 4230	•●-	H (m)	46	41	36	31	26	21	16	11						
	A/B		(t)	80	65	55	45	45	45	45	45						
	C		(t)	-	80	65	55	45	45	45	45						
	D		(t)	-	-	80	65	50	45	45	45						
1,6 m	S 40 A	•●-	H (m)	49	45,6	42,3	40,6	39	35,6	33,9	30,6	25,6	20,6	15,6			
	A/B		(t)	84	72	-	54	-	42	-	42	42	36	36			
	C		(t)	-	-	84	-	72	54	-	42	42	36	36			
	D		(t)	-	-	-	-	-	-	84	60	42	36	36			
1,6 m	S 41 A	•●-	H (m)	54	50,6	47,3	45,6	44	40,6	39	35,6	30,6	25,6	20,6	15,6		
	A/B		(t)	114	96	-	72	-	54	-	42	42	36	36			
	C		(t)	-	-	114	-	96	78	-	54	42	42	36	36		
	D		(t)	-	-	-	-	-	-	114	90	60	42	36	36		

City Topless
MDT 128



	F	D	GB	E	I	P
A	Distance entre cadres	Abstand zwischen den Rahmen	Distance between collars	Distancia entra marcos	Distanza fra i telai	Distância entre quadros
H1	Hauteur grue	Kranhöhe	Crane height	Altura grúa	Altezza gru	Altura da grua
P	Poids de la grue(en service)	Krangewicht (in Betrieb)	Crane weight (in service)	Peso de la grúa (en servicio)	Peso della gru (in servizio)	Peso da grua (em serviço)
R	Réaction horizontale	Horizontalkräfte	Horizontal reaction	Reaccion horizontal	Reazione orizzontale	Reacção horizontal
i	Nous consulter	Auf Anfrage	Consult us	Consultarnos	Consultateci	Consultar-nos



Mécanismes
Antriebe
Mechanisms
Mecanismos
Meccanismi
Mecanismos

MAY 2

Table with columns for crane models (33 LVF 15 Optima, 7 DVF 4, RVF 152 Optima+, ZC 4030, ZD 4230, S 40 A, S 41 A), units (m/min, t, tr/min, U/min, rpm), and technical specifications (ch-PS, hp, kW, CEI 38, IEC 38, kVA, 400 V, 50 Hz, 33 LVF: 50 kVA, 2000/14).

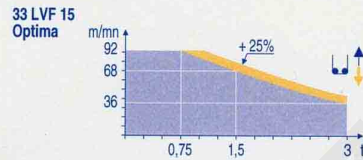


Table with columns for functions: F (Levage, Distribution, Orientation, Translation), D (Heben, Katzfahren, Schwenken, Kranfahren), GB (Hoisting, Trolleying, Slewing, Travelling), E (Elevación, Distribución, Orientación, Traslación), I (Sollevamento, Distribuzione, Rotazione, Traslazione), P (Elevação, Distribuição, Rotação, Translação). Includes compliance notes for CEE directives.

Document commercial non contractuel. Pour toute information technique se référer à la notice correspondante. Unverbindliches Vertriebsdokument. Für technische Informationen, siehe die entsprechenden Anweisungen. This commercial document is not legally binding. For any technical information, please refer to the corresponding instructions. Documento comercial no contractual. Para cualquier información técnica, ver la noticia correspondiente. Documento commerciale non vincolante, per tutte le informazioni tecniche fare riferimento al catalogo istruzioni. Documento comercial não contractual. Para qualquer informação técnica complementar consultar as respectivas instruções.



Americas
Tel: +1 920 683 6322
Tel: +1 717 597 8121
Europe - Middle East - Africa
Tel: +(33) 4 72 81 50 00
Tel: +(44) 191 565 6281
Asia - Pacific
Tel: +(65) 6861 7133
Fax: +(65) 6862 4142
www.manitowoccrane.com

18, rue de Charbonnières - B.P.173
69132 ECULLY Cedex - France
Tel: (33) 4 72 18 20 20
Fax: (33) 4 72 18 20 00
www.manitowoccrane.com www.potain.com

City Topless MDT 128
Réf. 2004 03 MAY 2
Copyright.Reproduction interdite © POTAIN 2004

Réalisation: HeadLines

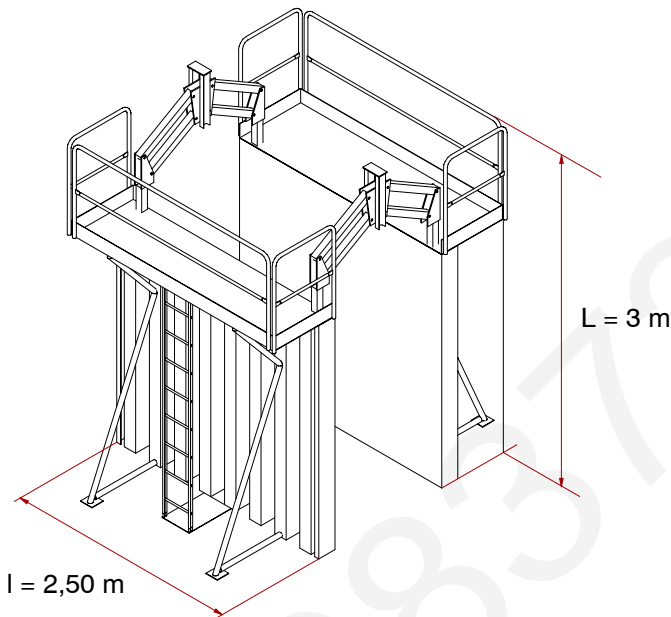


2. PERMISSIBLE WIND SPEED ACCORDING TO THE SURFACE OF A LIFTED LOAD

- The permissible operating wind speed is 72 km/h for a load of which the surface exposed to the wind does not exceed 1 m² per ton of useful load (standard data for the crane calculation). For reasons of stability, crane resistance and operating safety, it is necessary – in compliance with the standards in force – to reduce the permissible operating wind speed for handling loads with a surface/load ratio exceeding 1 m²/t.

2. 1. EVALUATION OF A LOAD SURFACE

- In easy cases, load with full or with latticed surface, the calculation of the surface is $S \text{ (m}^2\text{)} = L \times l$ – product of the two largest surfaces exposed to the wind (Ex.: sheetings, see below). In more difficult cases, PLEASE CONSULT US.



Example: $S = 3 \text{ m} \times 2,50 \text{ m} = 7,5 \text{ m}^2$

See the tables on the following pages for determining the permissible wind speed in service.

2. 2. TABLES OF PERMISSIBLE MAXIMUM WIND SPEEDS

- The tables of the following pages indicate the wind speed for:
 - a crane equipped with one trolley (SM/DM) which is used with 2–fall reeving (SM) or 4–fall reeving (DM),
 - a crane with only a 2–fall equipment (SM), but limited to its load capacity at 2–fall reeving.



It is not the actual value of the load which is important, but the crane capacity for a given radius which determines the maximum wind speed.



2. 2. 1. Description and use of tables

Characteristics – example :

- Crane type: MD 120 A
- Jib length: 50 m
- Radius: 30 m
- Weight of the load: 3,2 t

Calculation of the surface:

- Load surface: $S = 3 \text{ m} \times 2,50 \text{ m} = 7,5 \text{ m}^2 \approx 8 \text{ m}^2$

The permissible maximum wind speed in service is 48 km/h (see the grey tinted parts of the corresponding table). It corresponds to the crossing of the columns: radius 30 m, surface 8 m².

Radii	19	22	25	27	30	32	34	35	37	40	42	45	47	50
Load curve (in t)	6	5,13	4,41	4,03	3,64	3,27	3	3	2,79	2,53	2,38	2,18	2,06	1,9
S (in m ²)	Permissible maximum wind speed in service (in km/h)													
1	72	72	72	72	72	72	72	72	72	72	72	72	72	72
2	72	72	72	72	72	72	72	72	72	72	72	72	72	70
3	72	72	72	72	72	72	72	72	69	66	64	61	60	57
4	72	72	72	72	68	65	62	62	60	57	56	53	52	50
5	72	72	68	65	61	58	56	56	54	51	50	48	46	44
6	72	67	62	59	55	53	51	51	49	47	45	43	42	41
7	67	62	57	55	51	49	47	47	45	43	42	40	39	38
8	62	58	53	51	48	46	44	44	43	40	39	38	37	35

S = Surface of the lifted load in m²



2. 2. 2. Permissible maximum wind speed for a load surface bigger than 1m²/t (1C in 2C version)

2. 2. 2. 1. 55 m jib (1C)

Radii	17,3	20	22	25	27	30,1	33	35	37	40	42	45	47	50	52	55
Load curve (in t)	6	5	4,5	3,8	3,5	3	3	2,8	2,6	2,4	2,25	2,05	1,95	1,8	1,7	1,6
S (in m ²)	Permissible maximum wind speed in service (in km/h)															
1	72	72	72	72	72	72	72	72	72	72	72	72	72	72	72	72
2	72	72	72	72	72	72	72	72	72	72	72	72	71	68	66	64
3	72	72	72	72	72	72	72	70	67	64	62	60	58	56	54	53
4	72	72	72	70	67	62	62	60	58	56	54	52	50	48	47	46
5	72	72	68	63	60	56	56	54	52	50	48	46	45	43	42	41
6	72	66	62	57	55	51	51	49	47	46	44	42	41	39	38	37
7	67	61	58	53	51	47	47	46	44	42	41	39	38	37	35	34
8	62	57	54	50	48	44	44	43	41	39	38	36	36	34	33	32
9	59	54	51	47	45	42	42	40	39	37	36	34	34	32	31	30
10	56	51	48	44	43	39	39	38	37	35	34	33	32	31	30	29
11	53	49	46	42	41	38	38	36	35	34	33	31	30	29	28	27
12	51	46	44	41	39	36	36	35	34	32	31	30	29	28	27	26
13	49	45	42	39	37	35	35	33	32	31	30	29	28	27	26	25
14	47	43	41	38	36	33	33	32	31	30	29	28	27	26	25	24
15	46	42	39	36	35	32	32	31	30	29	28	27	26	25	24	24
16	44	40	38	35	34	31	31	30	29	28	27	26	25	24	23	23
17	43	39	37	34	33	30	30	29	28	27	26	25	24	23	23	22
18	42	38	36	33	32	29	29	28	27	26	25	24	24	23	22	21
19	40	37	35	32	31	29	29	28	27	26	25	24	23	22	22	21
20	39	36	34	31	30	28	28	27	26	25	24	23	22	22	21	20

S = Surface of the lifted load in m²



2. 2. 2. 2. 50 m jib (1C)

Radii	20	22	25	27	30	33	35,1	38,7	40	42	45	47	50		
Load curve (in t)	6	5,4	4,6	4,2	3,7	3,2	3	3	2,9	2,7	2,5	2,35	2,2		
S (in m ²)	Permissible maximum wind speed in service (in km/h)														
1	72	72	72	72	72	72	72	72	72	72	72	72	72	72	
2	72	72	72	72	72	72	72	72	72	72	72	72	72	72	
3	72	72	72	72	72	72	72	72	71	68	66	64	62		
4	72	72	72	72	69	64	62	62	61	59	57	55	53		
5	72	72	69	66	62	58	56	56	55	53	51	49	48		
6	72	68	63	60	57	53	51	51	50	48	46	45	44		
7	67	63	58	56	52	49	47	47	46	45	43	42	40		
8	62	59	55	52	49	46	44	44	43	42	40	39	38		
9	59	56	51	49	46	43	42	42	41	39	38	37	36		
10	56	53	49	47	44	41	39	39	39	37	36	35	34		
11	53	50	47	44	42	39	38	38	37	36	34	33	32		
12	51	48	45	43	40	37	36	36	35	34	33	32	31		
13	49	46	43	41	38	36	35	35	34	33	32	31	30		
14	47	45	41	39	37	34	33	33	33	32	30	29	29		
15	46	43	40	38	36	33	32	32	32	31	29	28	28		
16	44	42	39	37	35	32	31	31	31	30	28	28	27		
17	43	41	37	36	34	31	30	30	30	29	28	27	26		
18	42	39	36	35	33	30	29	29	29	28	27	26	25		
19	40	38	35	34	32	30	29	29	28	27	26	25	25		
20	39	37	35	33	31	29	28	28	27	26	25	25	24		

S = Surface of the lifted load in m²



2. 2. 2. 3. 45 m jib (1C)

Radii	20	22	25	27	30	33	35	38,7	40	42	45				
Load curve (in t)	6	5,4	4,6	4,2	3,7	3,2	3	3	2,9	2,7	2,5				
S (in m ²)	Permissible maximum wind speed in service (in km/h)														
1	72	72	72	72	72	72	72	72	72	72	72				
2	72	72	72	72	72	72	72	72	72	72	72				
3	72	72	72	72	72	72	72	72	71	68	66				
4	72	72	72	72	69	64	62	62	61	59	57				
5	72	72	69	66	62	58	56	56	55	53	51				
6	72	68	63	60	57	53	51	51	50	48	46				
7	67	63	58	56	52	49	47	47	46	45	43				
8	62	59	55	52	49	46	44	44	43	42	40				
9	59	56	51	49	46	43	42	42	41	39	38				
10	56	53	49	47	44	41	39	39	39	37	36				
11	53	50	47	44	42	39	38	38	37	36	34				
12	51	48	45	43	40	37	36	36	35	34	33				
13	49	46	43	41	38	36	35	35	34	33	32				
14	47	45	41	39	37	34	33	33	33	32	30				
15	46	43	40	38	36	33	32	32	32	31	29				
16	44	42	39	37	35	32	31	31	31	30	28				
17	43	41	37	36	34	31	30	30	30	29	28				
18	42	39	36	35	33	30	29	29	29	28	27				
19	40	38	35	34	32	30	29	29	28	27	26				
20	39	37	35	33	31	29	28	28	27	26	25				

S = Surface of the lifted load in m²



2. 2. 2. 4. 40 m jib (1C)

Radii	20	22	25	27	30	33	35,2	38,9	40						
Load curve (in t)	6	5,4	4,6	4,2	3,7	3,2	3	3	2,9						
S (in m ²)	Permissible maximum wind speed in service (in km/h)														
1	72	72	72	72	72	72	72	72	72						
2	72	72	72	72	72	72	72	72	72						
3	72	72	72	72	72	72	72	72	71						
4	72	72	72	72	69	64	62	62	61						
5	72	72	69	66	62	58	56	56	55						
6	72	68	63	60	57	53	51	51	50						
7	67	63	58	56	52	49	47	47	46						
8	62	59	55	52	49	46	44	44	43						
9	59	56	51	49	46	43	42	42	41						
10	56	53	49	47	44	41	39	39	39						
11	53	50	47	44	42	39	38	38	37						
12	51	48	45	43	40	37	36	36	35						
13	49	46	43	41	38	36	35	35	34						
14	47	45	41	39	37	34	33	33	33						
15	46	43	40	38	36	33	32	32	32						
16	44	42	39	37	35	32	31	31	31						
17	43	41	37	36	34	31	30	30	30						
18	42	39	36	35	33	30	29	29	29						
19	40	38	35	34	32	30	29	29	28						
20	39	37	35	33	31	29	28	28	27						

S = Surface of the lifted load in m²



2. 2. 2. 5. 35 m jib (1C)

Radii	20	22	25	27	30	33	35								
Load curve (in t)	6	5,4	4,6	4,2	3,7	3,2	3								
S (in m ²)	Permissible maximum wind speed in service (in km/h)														
1	72	72	72	72	72	72	72								
2	72	72	72	72	72	72	72								
3	72	72	72	72	72	72	72								
4	72	72	72	72	69	64	62								
5	72	72	69	66	62	58	56								
6	72	68	63	60	57	53	51								
7	67	63	58	56	52	49	47								
8	62	59	55	52	49	46	44								
9	59	56	51	49	46	43	42								
10	56	53	49	47	44	41	39								
11	53	50	47	44	42	39	38								
12	51	48	45	43	40	37	36								
13	49	46	43	41	38	36	35								
14	47	45	41	39	37	34	33								
15	46	43	40	38	36	33	32								
16	44	42	39	37	35	32	31								
17	43	41	37	36	34	31	30								
18	42	39	36	35	33	30	29								
19	40	38	35	34	32	30	29								
20	39	37	35	33	31	29	28								

S = Surface of the lifted load in m²



2. 2. 2. 6. 30 m jib (1C)

Radii	20,2	22	25	27	30													
Load curve (in t)	6	5,4	4,6	4,2	3,7													
S (in m ²)	Permissible maximum wind speed in service (in km/h)																	
1	72	72	72	72	72													
2	72	72	72	72	72													
3	72	72	72	72	72													
4	72	72	72	72	69													
5	72	72	69	66	62													
6	72	68	63	60	57													
7	67	63	58	56	52													
8	62	59	55	52	49													
9	59	56	51	49	46													
10	56	53	49	47	44													
11	53	50	47	44	42													
12	51	48	45	43	40													
13	49	46	43	41	38													
14	47	45	41	39	37													
15	46	43	40	38	36													
16	44	42	39	37	35													
17	43	41	37	36	34													
18	42	39	36	35	33													
19	40	38	35	34	32													
20	39	37	35	33	31													

S = Surface of the lifted load in m²



2. 2. 2. 7. 25 m jib (1C)

Radii	20,2	22	25												
Load curve (in t)	6	5,4	4,65												
S (in m ²)	Permissible maximum wind speed in service (in km/h)														
1	72	72	72												
2	72	72	72												
3	72	72	72												
4	72	72	72												
5	72	72	69												
6	72	68	63												
7	67	63	59												
8	62	59	55												
9	59	56	52												
10	56	53	49												
11	53	50	47												
12	51	48	45												
13	49	46	43												
14	47	45	41												
15	46	43	40												
16	44	42	39												
17	43	41	38												
18	42	39	37												
19	40	38	36												
20	39	37	35												

S = Surface of the lifted load in m²

03D-0000-110-0 / 03D-0500-019-0 14 05-04-04



2. 2. 3. Permissible maximum wind speed for a load surface bigger than 1m²/t (2C in 2C version)

2. 2. 3. 1. 55 m jib (2C)

Radii	17,3	20	22	25	27	30,1	33	35	37	40	42	45	47	50	52	55
Load curve (in t)	6	5	4,5	3,8	3,5	3	2,6	2,4	2,2	2	1,85	1,65	1,55	1,4	1,3	1,2
S (in m ²)	Permissible maximum wind speed in service (in km/h)															
1	72	72	72	72	72	72	72	72	72	72	72	72	72	72	72	72
2	72	72	72	72	72	72	72	72	72	72	69	65	63	60	58	56
3	72	72	72	72	72	72	67	64	62	59	57	53	52	49	47	46
4	72	72	72	70	67	62	58	56	53	51	49	46	45	43	41	39
5	72	72	68	63	60	56	52	50	48	46	44	41	40	38	37	35
6	72	66	62	57	55	51	47	46	44	42	40	38	37	35	34	32
7	67	61	58	53	51	47	44	42	40	38	37	35	34	32	31	30
8	62	57	54	50	48	44	41	39	38	36	35	33	32	30	29	28
9	59	54	51	47	45	42	39	37	36	34	33	31	30	28	27	26
10	56	51	48	44	43	39	37	35	34	32	31	29	28	27	26	25
11	53	49	46	42	41	38	35	34	32	31	30	28	27	26	25	24
12	51	46	44	41	39	36	34	32	31	29	28	27	26	25	24	23
13	49	45	42	39	37	35	32	31	30	28	27	26	25	24	23	22
14	47	43	41	38	36	33	31	30	29	27	26	25	24	23	22	21
15	46	42	39	36	35	32	30	29	28	26	25	24	23	22	21	20
16	44	40	38	35	34	31	29	28	27	25	24	23	22	21	21	20
17	43	39	37	34	33	30	28	27	26	25	24	22	22	21	20	19
18	42	38	36	33	32	29	27	26	25	24	23	22	21	20	19	19
19	40	37	35	32	31	29	27	26	25	23	22	21	21	20	19	18
20	39	36	34	31	30	28	26	25	24	23	22	21	20	19	18	18

S = Surface of the lifted load in m²



2. 2. 3. 2. 50 m jib (2C)

Radii	20	22	25	27	30	33	35,1	38,7	40	42	45	47	50		
Load curve (in t)	6	5,4	4,6	4,2	3,7	3,2	3	2,6	2,5	2,3	2,1	1,95	1,8		
S (in m ²)	Permissible maximum wind speed in service (in km/h)														
1	72	72	72	72	72	72	72	72	72	72	72	72	72		
2	72	72	72	72	72	72	72	72	72	72	72	72	71	68	
3	72	72	72	72	72	72	72	67	66	63	60	58	56		
4	72	72	72	72	69	64	62	58	57	55	52	50	48		
5	72	72	69	66	62	58	56	52	51	49	47	45	43		
6	72	68	63	60	57	53	51	47	46	45	43	41	39		
7	67	63	58	56	52	49	47	44	43	41	39	38	37		
8	62	59	55	52	49	46	44	41	40	39	37	36	34		
9	59	56	51	49	46	43	42	39	38	36	35	34	32		
10	56	53	49	47	44	41	39	37	36	35	33	32	31		
11	53	50	47	44	42	39	38	35	34	33	31	30	29		
12	51	48	45	43	40	37	36	34	33	32	30	29	28		
13	49	46	43	41	38	36	35	32	32	30	29	28	27		
14	47	45	41	39	37	34	33	31	30	29	28	27	26		
15	46	43	40	38	36	33	32	30	29	28	27	26	25		
16	44	42	39	37	35	32	31	29	28	27	26	25	24		
17	43	41	37	36	34	31	30	28	28	26	25	24	23		
18	42	39	36	35	33	30	29	27	27	26	25	24	23		
19	40	38	35	34	32	30	29	27	26	25	24	23	22		
20	39	37	35	33	31	29	28	26	25	24	23	22	22		

S = Surface of the lifted load in m²



2. 2. 3. 3. 45 m jib (2C)

Radii	20	22	25	27	30	33	35	38,7	40	42	45				
Load curve (in t)	6	5,4	4,6	4,2	3,7	3,2	3	2,6	2,5	2,3	2,1				
S (in m ²)	Permissible maximum wind speed in service (in km/h)														
1	72	72	72	72	72	72	72	72	72	72	72				
2	72	72	72	72	72	72	72	72	72	72	72				
3	72	72	72	72	72	72	72	67	66	63	60				
4	72	72	72	72	69	64	62	58	57	55	52				
5	72	72	69	66	62	58	56	52	51	49	47				
6	72	68	63	60	57	53	51	47	46	45	43				
7	67	63	58	56	52	49	47	44	43	41	39				
8	62	59	55	52	49	46	44	41	40	39	37				
9	59	56	51	49	46	43	42	39	38	36	35				
10	56	53	49	47	44	41	39	37	36	35	33				
11	53	50	47	44	42	39	38	35	34	33	31				
12	51	48	45	43	40	37	36	34	33	32	30				
13	49	46	43	41	38	36	35	32	32	30	29				
14	47	45	41	39	37	34	33	31	30	29	28				
15	46	43	40	38	36	33	32	30	29	28	27				
16	44	42	39	37	35	32	31	29	28	27	26				
17	43	41	37	36	34	31	30	28	28	26	25				
18	42	39	36	35	33	30	29	27	27	26	25				
19	40	38	35	34	32	30	29	27	26	25	24				
20	39	37	35	33	31	29	28	26	25	24	23				

S = Surface of the lifted load in m²



2. 2. 3. 4. 40 m jib (2C)

Radii	20	22	25	27	30	33	35,2	38,9	40						
Load curve (in t)	6	5,4	4,6	4,2	3,7	3,2	3	2,6	2,5						
S (in m ²)	Permissible maximum wind speed in service (in km/h)														
1	72	72	72	72	72	72	72	72	72						
2	72	72	72	72	72	72	72	72	72						
3	72	72	72	72	72	72	72	72	67	66					
4	72	72	72	72	69	64	62	58	57						
5	72	72	69	66	62	58	56	52	51						
6	72	68	63	60	57	53	51	47	46						
7	67	63	58	56	52	49	47	44	43						
8	62	59	55	52	49	46	44	41	40						
9	59	56	51	49	46	43	42	39	38						
10	56	53	49	47	44	41	39	37	36						
11	53	50	47	44	42	39	38	35	34						
12	51	48	45	43	40	37	36	34	33						
13	49	46	43	41	38	36	35	32	32						
14	47	45	41	39	37	34	33	31	30						
15	46	43	40	38	36	33	32	30	29						
16	44	42	39	37	35	32	31	29	28						
17	43	41	37	36	34	31	30	28	28						
18	42	39	36	35	33	30	29	27	27						
19	40	38	35	34	32	30	29	27	26						
20	39	37	35	33	31	29	28	26	25						

S = Surface of the lifted load in m²



2. 2. 3. 5. 35 m jib (2C)

Radii	20	22	25	27	30	33	35										
Load curve (in t)	6	5,4	4,6	4,2	3,7	3,2	3										
S (in m ²)	Permissible maximum wind speed in service (in km/h)																
1	72	72	72	72	72	72	72										
2	72	72	72	72	72	72	72										
3	72	72	72	72	72	72	72										
4	72	72	72	72	69	64	62										
5	72	72	69	66	62	58	56										
6	72	68	63	60	57	53	51										
7	67	63	58	56	52	49	47										
8	62	59	55	52	49	46	44										
9	59	56	51	49	46	43	42										
10	56	53	49	47	44	41	39										
11	53	50	47	44	42	39	38										
12	51	48	45	43	40	37	36										
13	49	46	43	41	38	36	35										
14	47	45	41	39	37	34	33										
15	46	43	40	38	36	33	32										
16	44	42	39	37	35	32	31										
17	43	41	37	36	34	31	30										
18	42	39	36	35	33	30	29										
19	40	38	35	34	32	30	29										
20	39	37	35	33	31	29	28										

S = Surface of the lifted load in m²



2. 2. 3. 6. 30 m jib (2C)

Radii	20,2	22	25	27	30										
Load curve (in t)	6	5,4	4,6	4,2	3,7										
S (in m ²)	Permissible maximum wind speed in service (in km/h)														
1	72	72	72	72	72										
2	72	72	72	72	72										
3	72	72	72	72	72										
4	72	72	72	72	69										
5	72	72	69	66	62										
6	72	68	63	60	57										
7	67	63	58	56	52										
8	62	59	55	52	49										
9	59	56	51	49	46										
10	56	53	49	47	44										
11	53	50	47	44	42										
12	51	48	45	43	40										
13	49	46	43	41	38										
14	47	45	41	39	37										
15	46	43	40	38	36										
16	44	42	39	37	35										
17	43	41	37	36	34										
18	42	39	36	35	33										
19	40	38	35	34	32										
20	39	37	35	33	31										

S = Surface of the lifted load in m²

03D-0000-110-0 / 03D-0500-020-0 20 05-04-04



2. 2. 3. 7. 25 m jib (2C)

Radii	20,2	22	25															
Load curve (in t)	6	5,4	4,65															
S (in m ²)	Permissible maximum wind speed in service (in km/h)																	
1	72	72	72															
2	72	72	72															
3	72	72	72															
4	72	72	72															
5	72	72	69															
6	72	68	63															
7	67	63	59															
8	62	59	55															
9	59	56	52															
10	56	53	49															
11	53	50	47															
12	51	48	45															
13	49	46	43															
14	47	45	41															
15	46	43	40															
16	44	42	39															
17	43	41	38															
18	42	39	37															
19	40	38	36															
20	39	37	35															

S = Surface of the lifted load in m²