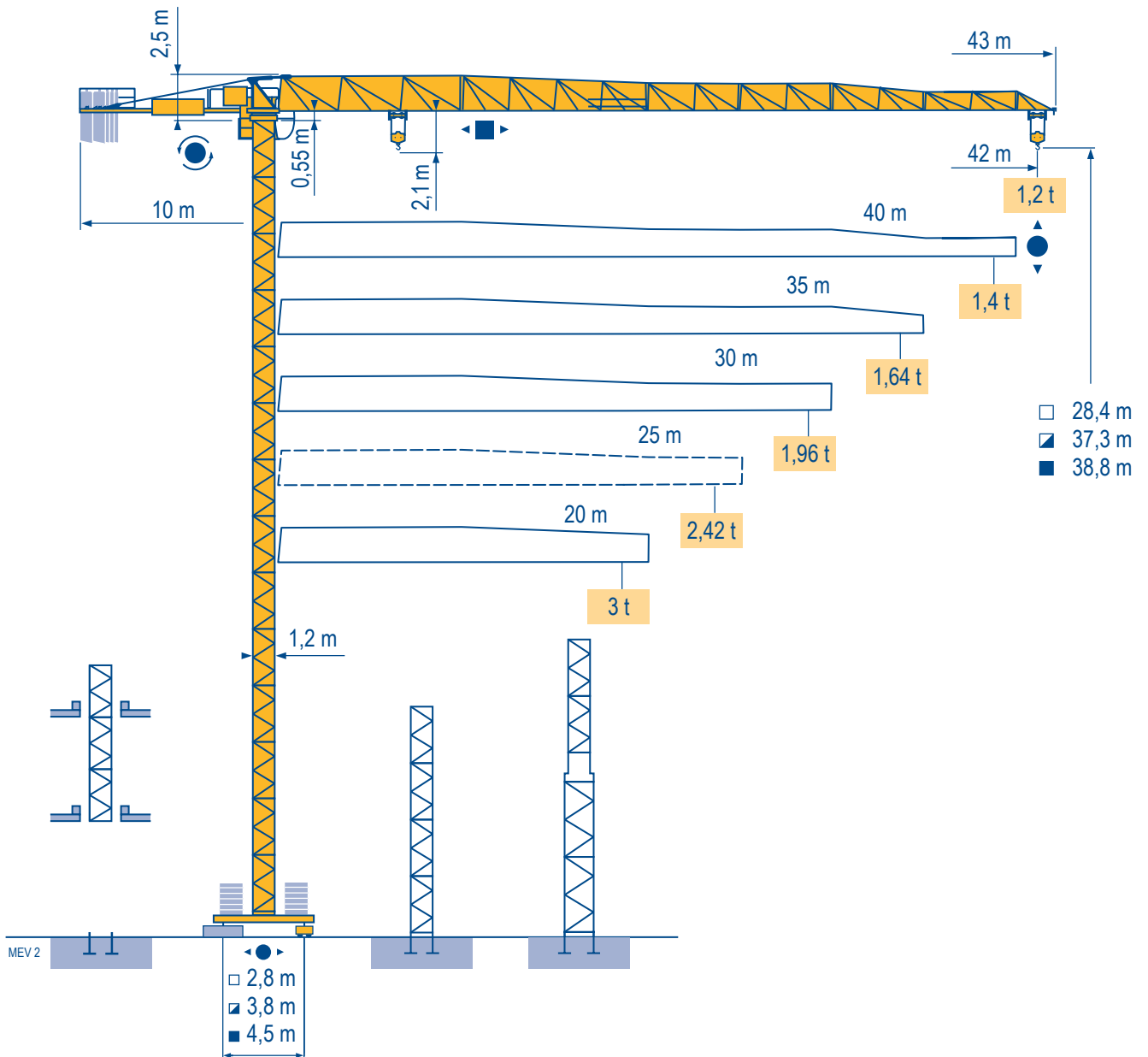


MCT 58



City Topless

Mat / Réactions \square 1,2 m

Maste / Eckdrücke \blacktriangle

Masts / Reactions 20 m \Rightarrow 42 m

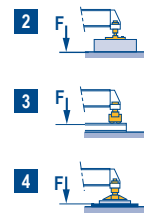
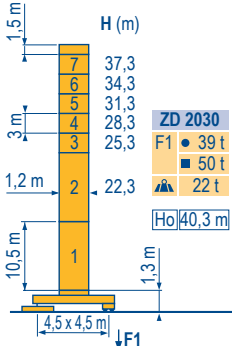
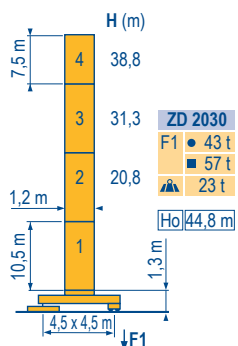
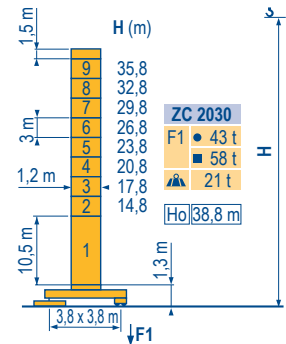
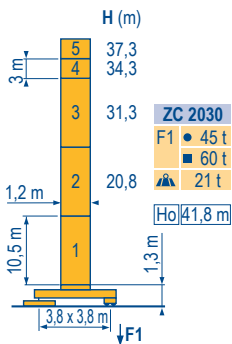
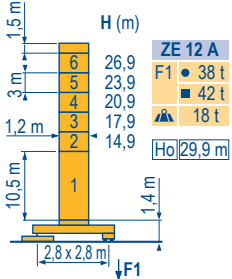
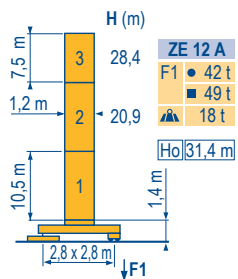
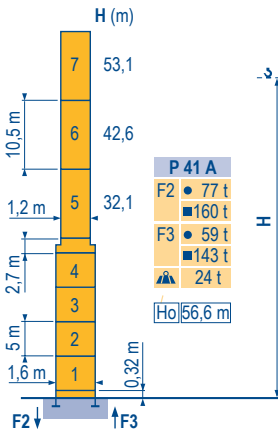
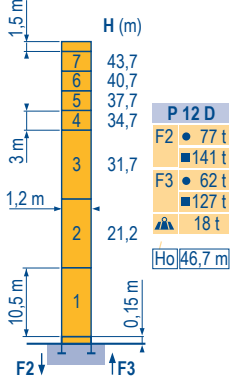
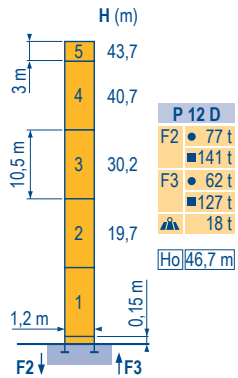
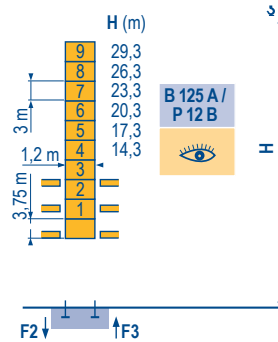
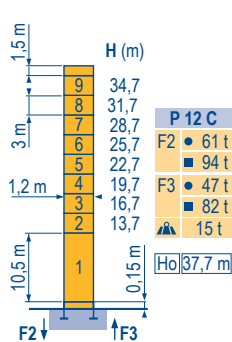
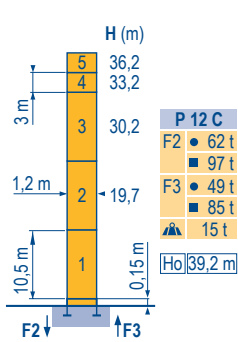
Reactions

Mástil / Reacciones

Torre / Reazioni

Tramo / Reações

MEV2



	ZE 12 A	ZC 2030 ZD2030
2	H2 = H + 0,15 m	H2 = H + 0,3 m
3	H3 = H	H3 = H
4	H4 = H	H4 = H + 0,2 m

CityTopless
MCT 58



F	D	GB	E	I	P
● Réactions en service ■ Réactions hors service ▲ A vide sans lest (ni train de transport) avec flèche et hauteur maximum.	● Reaktionskräfte in Betrieb ■ Reaktionskräfte außer Betrieb ▲ Ohne Last, Ballast (und Transportachse), mit Maximalausleger und Maximalhöhe.	● Reactions in service ■ Reactions out of service ▲ Without load, ballast (or transport axes), with maximum jib and maximum height.	● Reacciones en servicio ■ Reacciones fuera de servicio ▲ Sin carga, sin lastre, (ni tren de transporte), flecha y altura máxima.	● Reazioni in servizio ■ Reazioni fuori servizio ▲ A vuoto, senza zavorra (ne assali di trasporto) con braccio massimo e altezza massima.	● Reações em serviço ■ Reações fora de serviço ▲ Sem carga (nem trem de transporte)- sem lastro com lança e altura máximas.
Ho H sans cabine	Ho H Ohne Fahrerhaus	Ho H without cab	Ho H sin cabina	Ho H senza cabina	Ho H sem cabine

Courbes de charges

Lastkurven

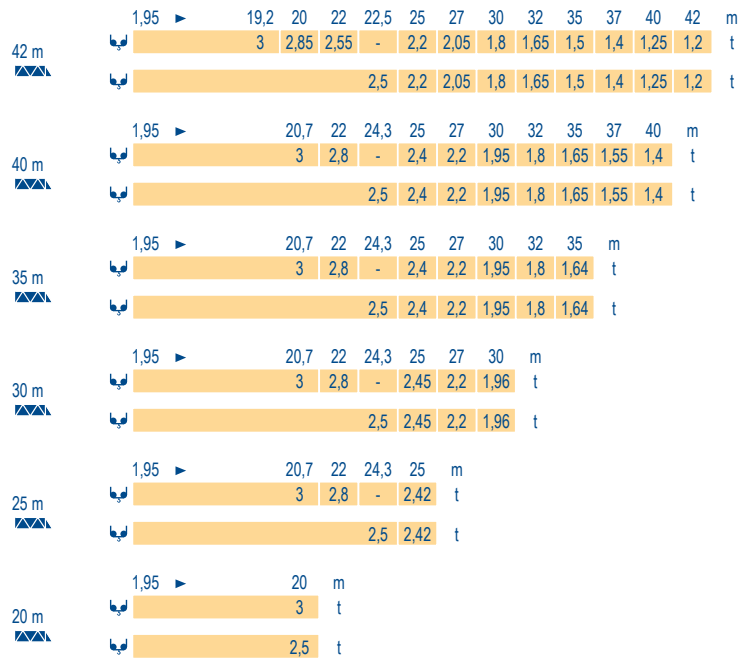
Load diagrams

Curvas de cargas

Curve di carico

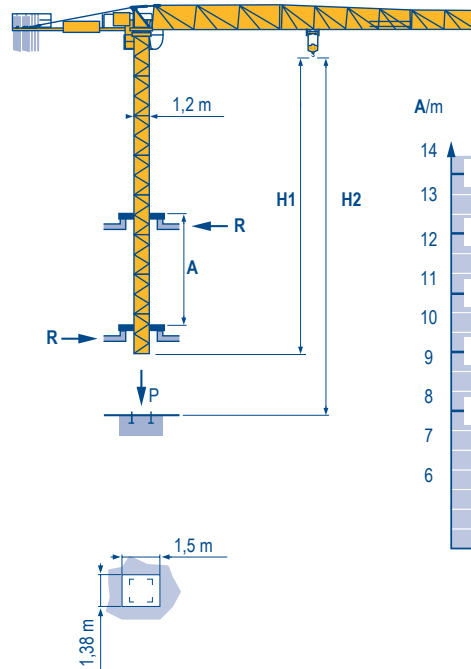
Curva de cargas

MEV 1

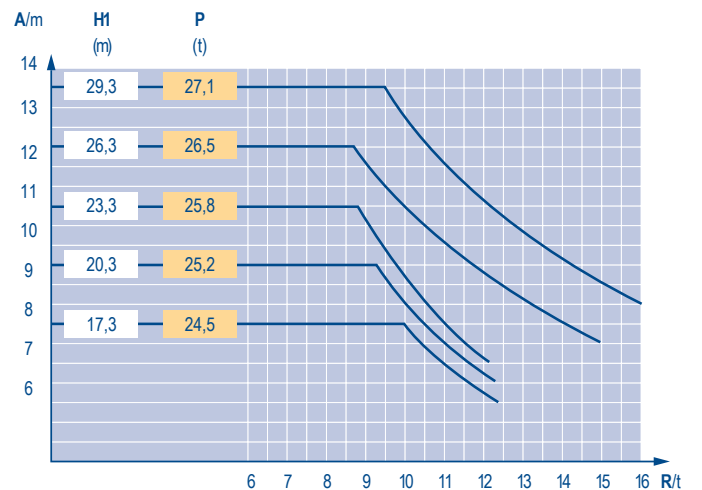


Télescopage sur dalles
Kletterkrane im Gebäude
Climbing crane
Telescopage gruas trepadoras
Gru in cavedio
Telescopagem sobre lages

MEV 2



B 125 A



City Topless
MCT 58

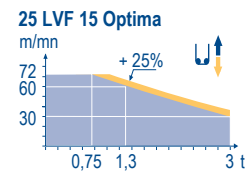
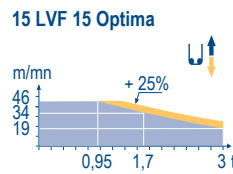
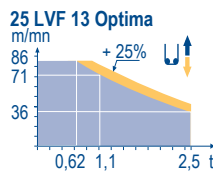
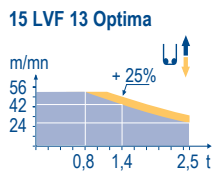
POTAIN

	F	D	GB	E	I	P
A	Distance entre cadres	Abstand zwischen den Rahmen	Distance between collars	Distancia entra marcos	Distanza fra i telai	Distância entre quadros
H1	Hauteur grue	Kranhöhe	Crane height	Altura grúa	Altezza gru	Altura da grua
P	Poids de la grue(en service)	Krangewicht (in Betrieb)	Crane weight (in service)	Peso de la grúa (en servicio)	Peso della gru (in servizio)	Peso da grua (em serviço)
R	Réaction horizontale	Horizontalkräfte	Horizontal reaction	Reaccion horizontal	Reazione orizzontale	Reacção horizontal
	Voir télescopage sur dalles	Siehe Kletterkrane im Gebäude	See climbing crane	Veja grua trepadora	Consultare gru in cavedio	Ver telescopagem sobre lages

Mécanismes
Antriebe
Mechanisms
Mecanismos
Meccanismi
Mecanismos

MEV 1

									ch - PS hp	kW					
▲	15 LVF 13 Optima	m/min	2,8	→	7,6	→	24	→	42	→	56	15	11	200 m	
		t	2,5		2,5		2,5		1,4		0,8				
	25 LVF 13 Optima	m/min	4,3	→	11,4	→	36	→	57	→	71	→	25	18	225 m
		t	2,5		2,5		2,5		1,45		1,1		0,62		
●	15 LVF 15 Optima	m/min	2,3	→	6,1	→	19	→	34	→	46	15	11	159 m	
		t	3		3		3		1,7		0,95				
●	25 LVF 15 Optima	m/min	3,6	→	9,6	→	30	→	48	→	60	→	25	18	228 m
		t	3		3		3		1,7		1,3		0,75		
	RVF 51 Optima +	tr/min U/min - rpm	0 → 0,8							5,5	4				
	2 DVF 2	m/min	0 → 51							2	1,5				
	ZE 12 A TVD 324	m/min	26							2 x 4	2 x 2,9				
	ZC 2030 ZD 2030 RT 224	m/min	25							2 x 4	2 x 2,9				
CEI 38		IEC 38							kVA						
400 V (+6% -10%) 50 Hz									15 LVF : 25 kVA 25 LVF : 35 kVA						



	F	D	GB	E	I	P
	Leverage	Heben	Hoisting	Elevación	Sollevamento	Elevação
	Distribution	Katzfahren	Trolleying	Distribución	Distribuzione	Distribuição
	Orientation	Schwenken	Slewing	Orientación	Rotazione	Rotação
	Translation	Kranfahren	Travelling	Traslación	Traslazione	Translação

Document commercial non contractuel. Pour toute information technique se référer à la notice correspondante. Unverbindliches Vertriebsdokument. Für technische Informationen, siehe die entsprechenden Anweisungen. This commercial document is not legally binding. For any technical information, please refer to the corresponding instructions. Documento comercial non contractuel. Para cualquier información técnica, ver la noticia correspondiente. Documento commerciale non vincolante, per tutte le informazioni tecniche fare riferimento al catalogo istruzioni. Documento comercial não contratual. Para qualquer informação técnica complementar consultar as respectivas instruções.



18, rue de Charbonnières - B.R.173
69132 ECULLY Cedex - France

Tel. : +33 (0) 4 72 18 20 20
Fax. : +33 (0) 4 72 18 20 00
www.manitowoccrane.com

Americas

Tel : +1 888 479 7278
Tel : +1 717 593 2000

Europe - Middle East - Africa

Tel : +33 (0) 4 72 81 50 00
Tel : +44 (0) 191 522 2000

Asia - Pacific

Tel : +65 6264 1188
Fax : +65 6862 4040

www.manitowoccrane.com

City Topless MCT 58

Code H-24970-02_Réf. 2007 28 MEV 2

Copyright.Reproduction interdite © POTAIN 2007