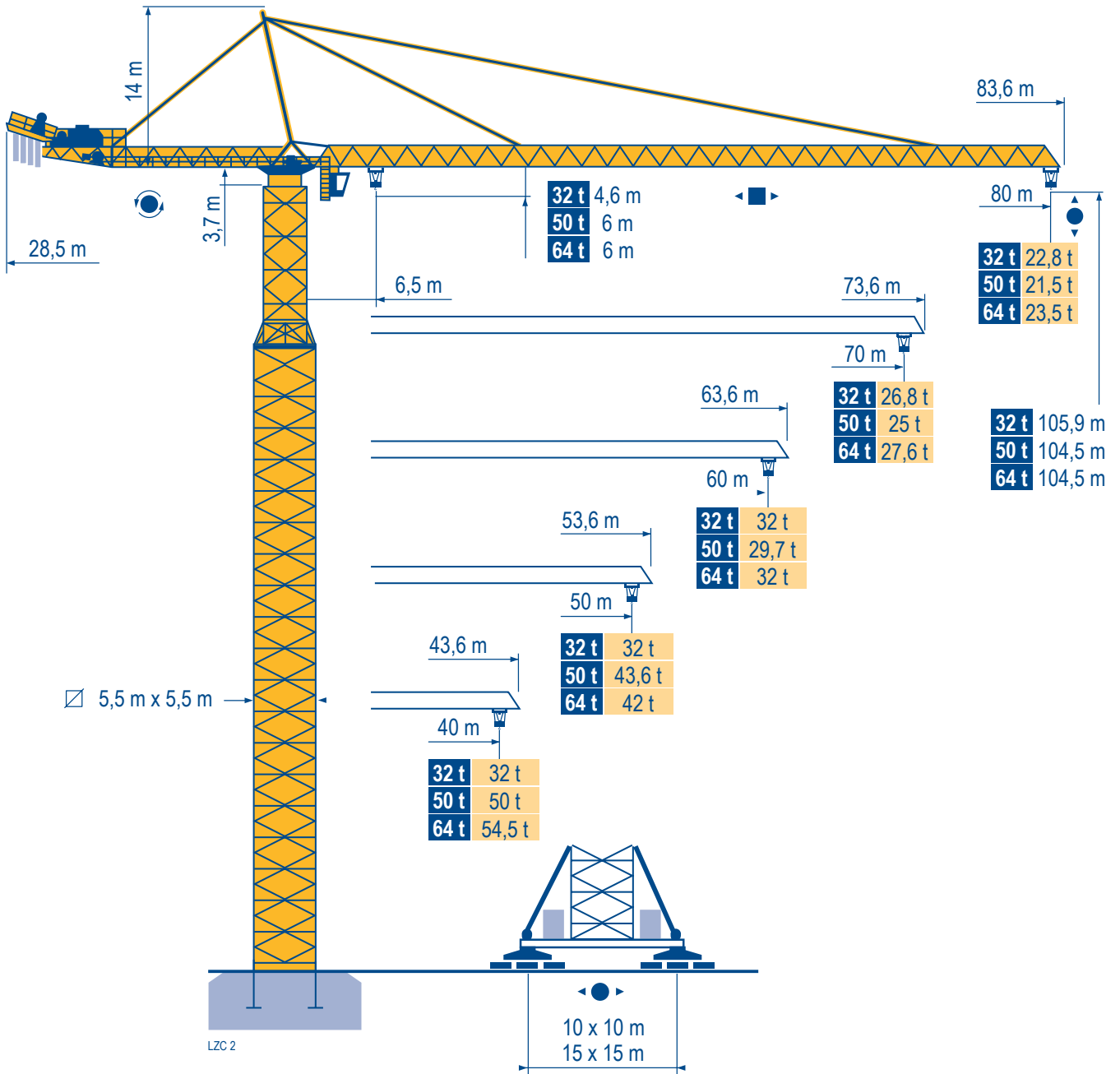


MD 2200



Mat / Réactions 5,5 m x 5,5 m

Maste /
Eckdrücke

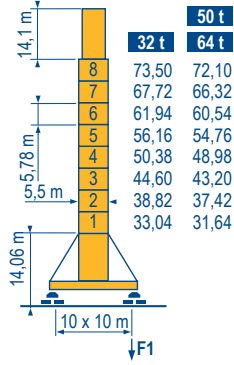
Masts /
Reactions

Mástil /
Reacciones

Torre / Reazioni

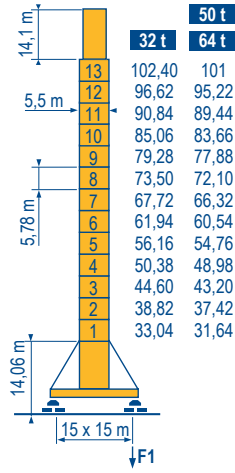
Tramo /
Reacções

LZC 2



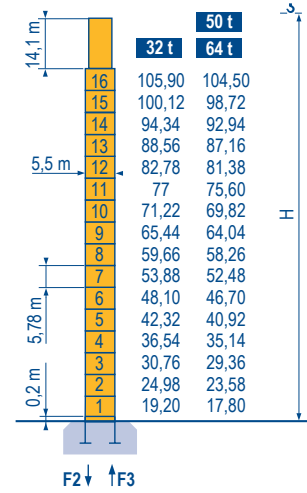
JC 1050

F1	32 t	320 t	250 t
	50 t	320 t	250 t
	64 t	320 t	250 t



KA 1051

F1	32 t	268 t	235 t
	50 t	268 t	235 t
	64 t	268 t	235 t



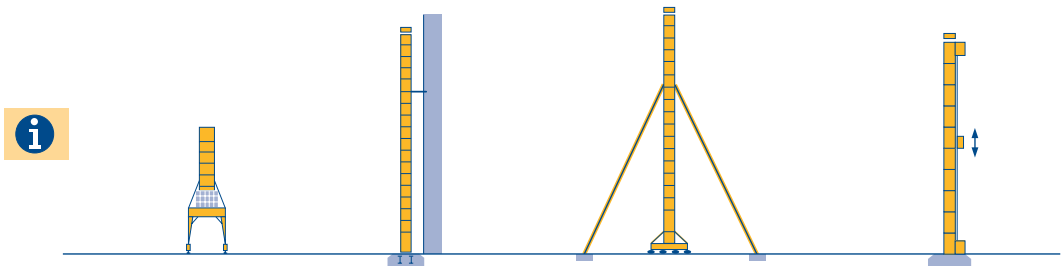
PA 1052

F2	32 t	445 t	371 t
	50 t	445 t	371 t
	64 t	445 t	371 t

F3	32 t	173 t	125 t
	50 t	173 t	125 t
	64 t	173 t	125 t

Autres implantations
Aufstellmöglichkeiten
Mounting possibilities
Otras implantaciones
Altre postazioni
Outras implantações

LZC 1



MD 2200

POTAIN

F

Réactions en service

Réactions hors service

A vide sans lest (ni train de transport) avec flèche et hauteur maximum.

Nous consulter

D

Reaktionskräfte in Betrieb

Reaktionskräfte außer Betrieb

Ohne Last, Ballast (und Transportachse), mit Maximalausleger und Maximalhöhe.

Auf Anfrage

GB

Reactions in service

Reactions out of service

Without load, ballast (or transport axles), with maximum jib and maximum height.

Consult us

E

Reacciones en servicio

Reacciones fuera de servicio

Sin carga, sin lastre, (ni tren de transporte), flecha y altura máxima.

Consultarnos

I

Reazioni in servizio

Reazioni fuori servizio

A vuoto, senza zavorra (ne assali di trasporto) con braccio massimo e altezza massima.

Consultateci

P

Reacções em serviço

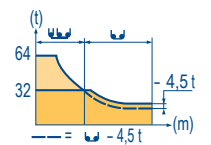
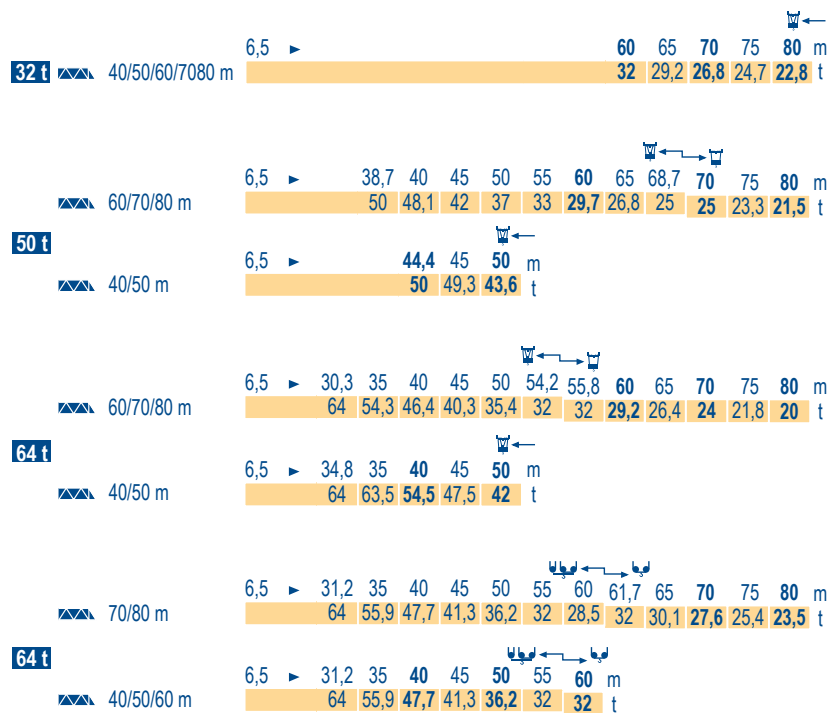
Reacções fora de serviço

Sem carga (nem trem de transporte) - sem lastro com lança e altura máximas.

Consultar-nos

Courbes de charges
Lastkurven
Load diagrams
Curvas de cargas
Curve di carico
Curva de cargas

L20 2



Mécanismes
Antriebe
Mechanisms
Mecanismos
Meccanismi
Mecanismos

L20 4

①			⏏					⏏					ch - PS hp	kW	
▲	32 t	250 LCC 80	m/min	46 → 68 → 86 → 108 → 122	23 → 34 → 43 → 54 → 61					250	180	620 m			
		t	16 12 8 4 2	32 24 16 6 4	250	180	690 m								
	50 t	250 LCC 125	m/min	30 → 44 → 56 → 72 → 80	15 → 22 → 28 → 36 → 40					250	180	690 m			
		t	25 18,8 12,5 6,2 3,1	50 37,5 25 12,5 6,25	250	180	440 m								
64 t	250 LCC 160	m/min	24 → 34 → 44 → 56 → 62	12 → 17 → 22 → 28 → 31					250	180	440 m				
	t	32 24 16 8 4	64 48 32 16 8	500	370	610 m									
◀ ▶	32 t	15 DVF 16	m/min	0 → 33 (32 t) - 0 → 50 (16 t) - 0 → 67 (8 t) - 0 → 100 (2 t)								15	11		
	50 t	25 DVF 25	m/min	0 → 33 (50 t) - 0 → 66 (25 t) - 0 → 80 (12,5 t)								25	18		
◀ ▶	64 t	25 DVF 33	m/min	0 → 25 (64 t) - 0 → 50 (32 t)								25	18		
	⦿	RVF	tr/min	0 → 0,6								4 x 25	4 x 18,4		
U/min rpm			0 → 16								16 x 4	16 x 3			
⏏			m/min	8,5 - 17								12x 5	12 x 3,7		
CEI 38			IEC 38			kVA									
400 V (+6% -10%) 50 Hz						250 LCC : 360 kVA 500 LCC : 560 kVA									

MD 2200



F	D	GB	E	I	P
Levage	Heben	Hoisting	Elevación	Sollevarmento	Elevação
	Katzfahren	Trolleying	Distribución	Ditribuzione	Distribuição
	Schwenken	Slewing	Orientación	Rotazione	Rotação
	Kranfahren	Travelling	Traslación	Traslazione	Translação



Document commercial non contractuel. Pour toute information technique se référer à la notice correspondante.

Unverbindliches Vertriebsdokument. Für technische Informationen, siehe die entsprechenden Anweisungen.

This commercial document is not legally binding. For any technical information, please refer to the corresponding instructions.

Documento commercial no contractuel. Para cualquier información técnica, ver la noticia correspondiente.

Documento commerciale non vincolante, per tutte le informazioni tecniche fare riferimento al catalogo istruzioni.

Documento comercial não contratual. Para qualquer informação técnica complementar consultar as respectivas instruções.



Manitowoc Crane Group



18, rue de Charbonnières - B.R.173
69132 ECULLY Cedex - France

Tél. : +33 (0) 4 72 18 20 20

Fax. : +33 (0) 4 72 18 20 00

www.manitowoccrane.com

Americas

Tel : +1 888 479 7278

Tel : +1 717 593 2000

Europe - Middle East - Africa

Tel : +33 (0) 4 72 81 50 00

Tel : +44 (0) 191 522 2000

Asia - Pacific

Tel : +65 6264 1188

Fax : +65 6862 4040

www.manitowoccrane.com

MD 2200

Code E-91985-78_Réf. 2003 48 LZC 5

Copyright.Reproduction interdite © POTAIN 2003