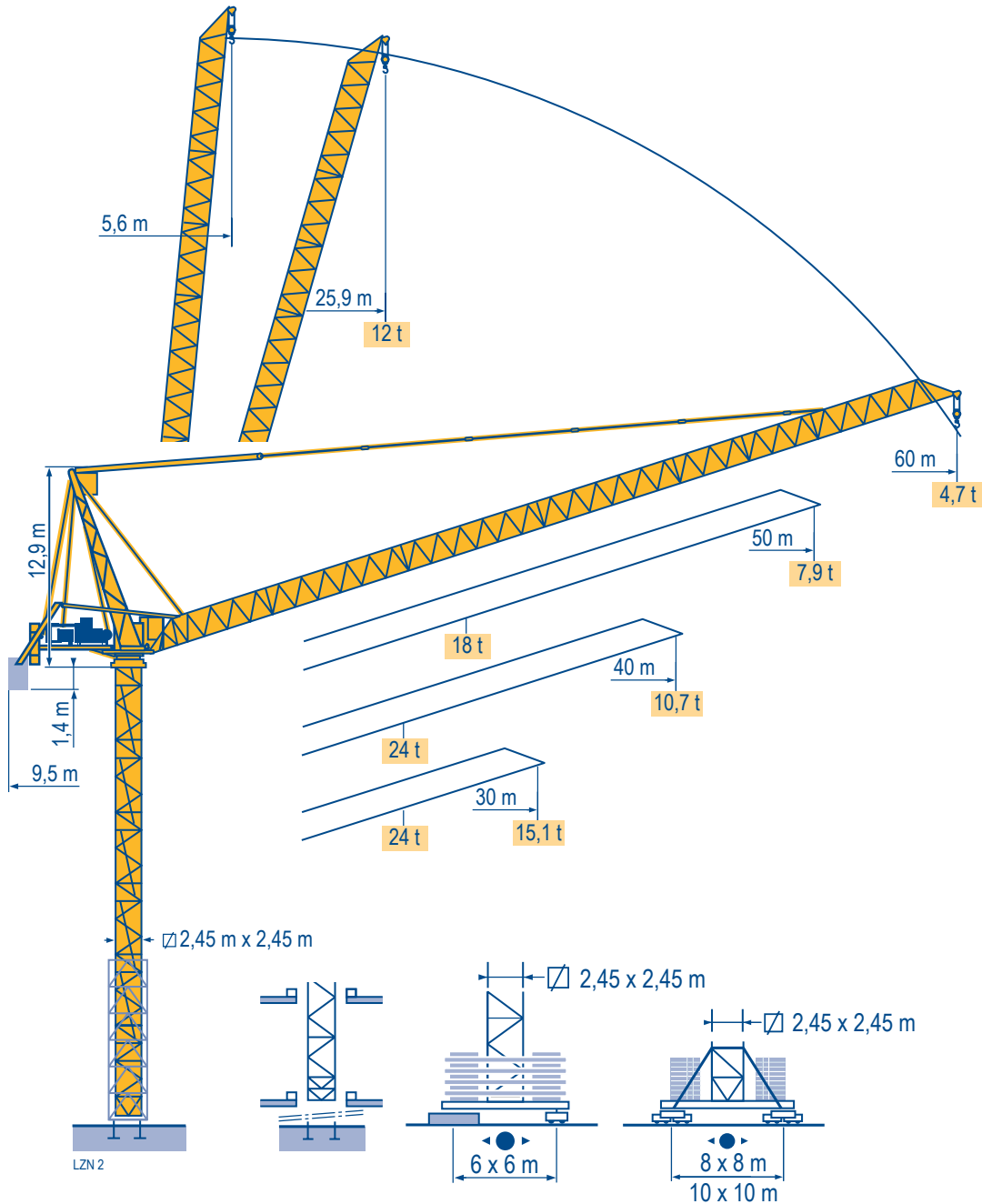
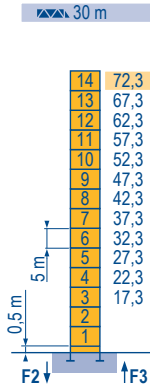


MR 405 B H24



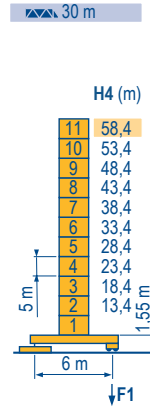
Mat / Réactions \square 2,45 m
 Maste / Eckdrücke 30 m \Rightarrow 60 m
 Masts / Reactions
 Mástil / Reacciones
 Torre / Reazioni
 Tramo / Reações

LZN 3



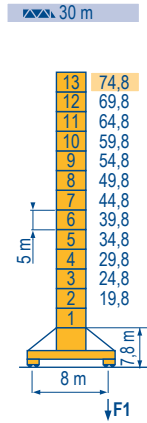
H (m)	5 m	3,33 m
30 m	14	-
40 m	12	2
50 m	11	2
60 m	10	2

P 800 A
 F2 ● 227 t
 ■ 360 t
 F3 ● 153 t
 ■ 292 t
 ▲ 104 t



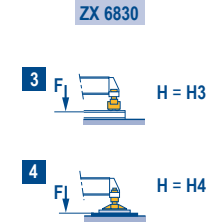
H (m)	H4 (m)	H3 (m)	5 m	3,33 m
30 m	58,4	-	11	-
40 m	53,4	53,7	10	-
50 m	48,4	50,3	9	1
60 m	43,4	48,7	8	2
	38,4	-	7	-
	33,4	45,3	7	2
	28,4	-	-	-
	23,4	-	-	-
	18,4	-	-	-
	13,4	-	-	-

ZX 6830
 F1 ● 147 t
 ■ 177 t
 ▲ 106 t

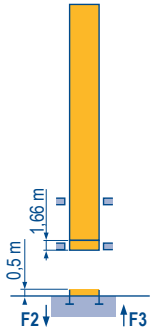


H (m)	5 m	3,33 m
30 m	13	-
40 m	12	-
50 m	10	2
60 m	9	2

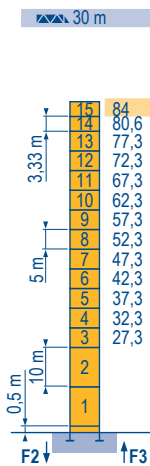
Y 800 A
 F1 ● 160 t
 ■ 202 t
 ▲ 138 t



\square 2,45 m
 \square 30 m \Rightarrow 60 m

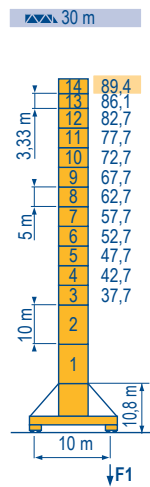


B 800 B
 i



H (m)	10 m	5 m	3,33 m	
30 m	84	2	11	2
40 m	80,6	2	11	1
50 m	75,6	2	10	1
60 m	70,6	2	9	1

P 850 A
 F2 ● 274 t
 ■ 505 t
 F3 ● 184 t
 ■ 423 t
 ▲ 120 t



H (m)	10 m	5 m	3,33 m	
30 m	89,4	2	10	2
40 m	86,1	2	10	1
50 m	82,7	2	10	-
60 m	79,4	2	8	2

J 850 A
 F1 ● 172 t
 ■ 252 t
 ▲ 173 t

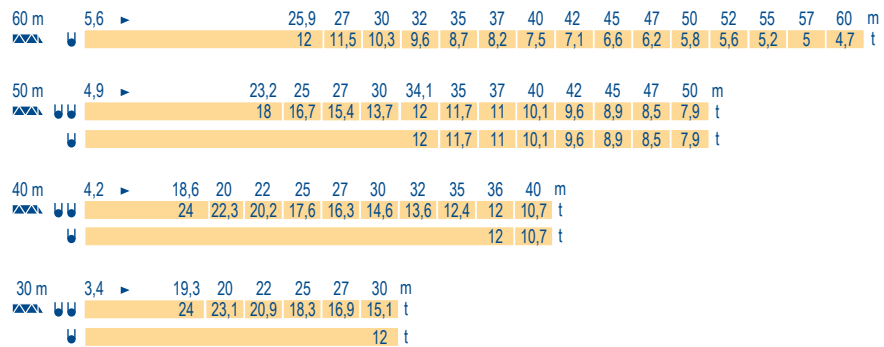
MR 405 B H24

POTAIN

F	D	GB	E	I	P
● Réactions en service	● Reaktionskräfte in Betrieb	● Reactions in service	● Reacciones en servicio	● Reazioni in servizio	● Reações em serviço
■ Réactions hors service	■ Reaktionskräfte außer Betrieb	■ Reactions out of service	■ Reacciones fuera de servicio	■ Reazioni fuori servizio	■ Reações fora de serviço
A vide sans lest (ni train de transport) avec flèche et hauteur maximum.	Ohne Last, Ballast (und Transportachse), mit Maximalausleger und Maximalhöhe.	Without load, ballast (or transport axles), with maximum jib and maximum height.	Sin carga, sin lastre, (ni tren de transporte), flecha y altura máxima.	A vuoto, senza zavorra (ne assali di trasporto) con braccio massimo e altezza massima.	Sem carga (nem trem de transporte)- sem lastro com lança e altura máximas.
Nous consulter	Auf Anfrage	Consult us	Consultarnos	Consultateci	Consultar-nos

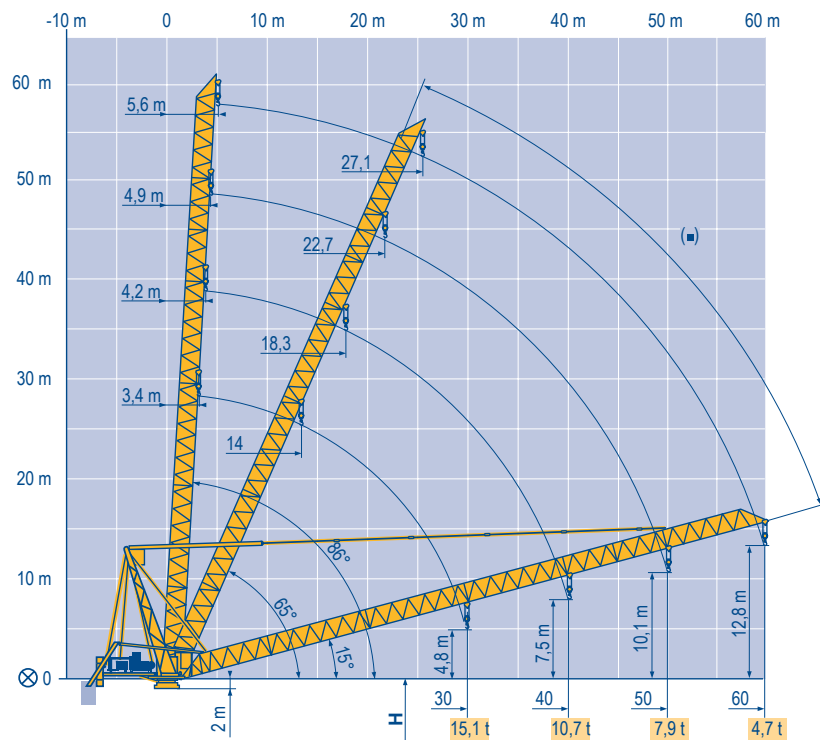
Courbes de charges
 Lastkurven
 Load diagrams
 Curvas de cargas
 Curve di carico
 Curva de cargas

LZN 1



Flèche relevée
 Ausleger in Steilstellung
 Luffing jib
 Flecha izada
 Braccio impennato
 Lança inclinada

LZN 1



MR 405 B H24

POTAIN



F
 Axe articulation flèche
 Position girouette

D
 Ausleger-gelenkachse
 Windfreistellung

GB
 Jib hinge shaft
 Weathervaning position

E
 Eje articulación de flecha
 Posición eleta

I
 Asse cerniera braccio
 Libera rotazione

P
 Eixo de articulação da lança
 Posição em catavento

Mécanismes
Antriebe
Mechanisms
Mecanismos
Meccanismi
Mecanismos

LZN 3

MR 405 B H24 - 50 Hz											ch - PS hp	kW			
	90 LBR 60 L910	m/min	2,8/28	4,4/44	7/70	11/111	1,4/14	2,2/22	3,5/35	5,5/55	90	66	910 m		
		t	12	7,3	4,2	2,25	24	14,6	8,4	4,5					
	62 VBR	tr/min U/min - rpm	2 min 48 s										62	45	
	R - 8,8	m/min	0 → 0,67								2 x 6	2 x 4,4			
	RT584 A1 - 2V	m/min	13,5 - 27								8 x 7	8 x 5,2			
	J 850 A														
	RT 664 A2B - 2V	m/min	16 - 32								6 x 7	6 x 5,2			
CEI 38	IEC 38	400 V (+6% -10%)	kVA		170 kVA										

MR 405 B H24 - 60 Hz											ch - PS hp	kW			
	108 LBR 60 L910	m/min	3,3/33	5,3/53	8,4/84	13,3/133	1,6/16,5	2,7/26,5	4,2/42	6,7/67	108	79	910 m		
		t	12	7,4	4,2	2,25	24	14,8	8,4	4,5					
	74 VBR	tr/min U/min - rpm	2 min 20 s										74	54	
	R - 10,5	m/min	0 → 0,8								2 x 7,2	2 x 5,3			
	RT584 A1 - 2V	m/min	16 - 32								8 x 8,4	8 x 6,2			
	J 850 A														
	RT 664 A2B - 2V	m/min	19 - 38								6 x 8,4	6 x 6,2			
CEI 38	IEC 38	480 V (+6% -10%)	kVA		205 kVA										

F	D	GB	E	I	P
Levage	Heben	Hoisting	Elevación	Sollevamento	Elevação
Relevage	Ausleger-Einziehen	Luffing	Elevación de flecha	Brandeggio	Inclinação da lança
Orientation	Schwenken	Slewing	Orientación	Rotazione	Rotação
Translation	Kranfahren	Travelling	Traslación	Traslazione	Translação

Document commercial non contractuel. Pour toute information technique se référer à la notice correspondante. Unverbindliches Vertriebsdokument. Für technische Informationen, siehe die entsprechenden Anweisungen. This commercial document is not legally binding. For any technical information, please refer to the corresponding instructions. Documento comercial no contractuel. Para cualquier información técnica, ver la noticia correspondiente. Documento commerciale non vincolante, per tutte le informazioni tecniche fare riferimento al catalogo istruzioni. Documento comercial não contratual. Para qualquer informação técnica complementar consultar as respectivas instruções.



Americas
Tel : +1 888 479 7278
Tel : +1 717 593 2000

Europe - Middle East - Africa
Tel : +33 (0) 4 72 81 50 00
Tel : +44 (0) 191 522 2000

Asia - Pacific
Tel : +65 6264 1188
Fax : +65 6862 4040

www.manitowoccrane.com

18, rue de Charbonnières - B.R.173
69132 ECULLY Cedex - France

Tél. : +33 (0) 4 72 18 20 20
Fax. : +33 (0) 4 72 18 20 00
www.manitowoccrane.com

MR 405 B H24
Code J-91985-82_Réf. 2003 48 LZN 4

Copyright.Reproduction interdite © POTAIN 2003

Réalisation Sedoc