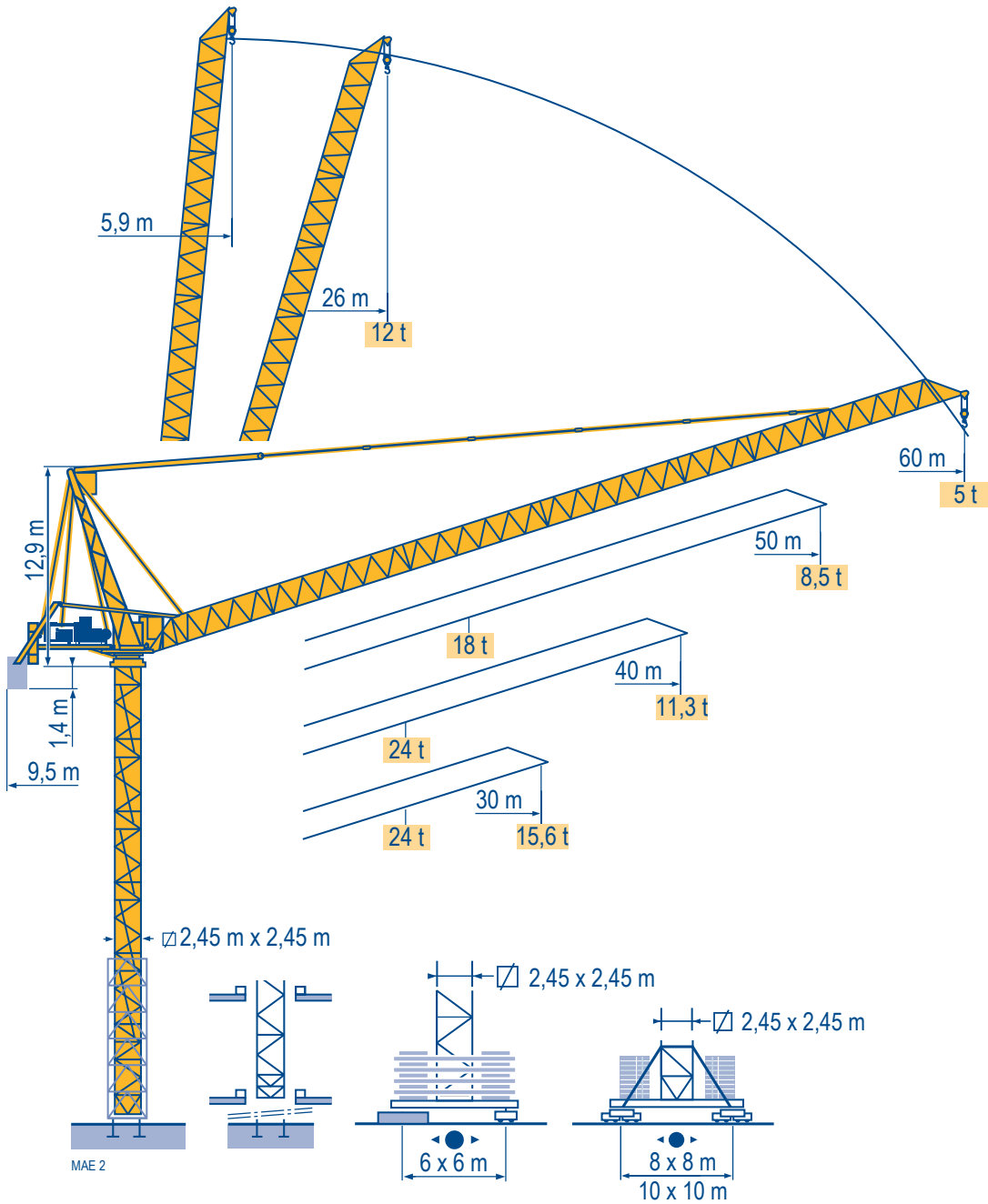
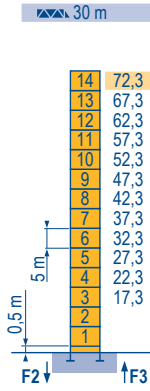


## MR 415 H24



Mat / Réactions  $\square$  2,45 m  
 Maste / Eckdrücke 30 m  $\Rightarrow$  60 m  
 Masts / Reactions  
 Mástil / Reacciones  
 Torre / Reazioni  
 Tramo / Reações

MAE 4



H (m)	5 m	3,33 m
30 m	14	-
40 m	12	2
50 m	11	2
60 m	10	2

**P 800 A**

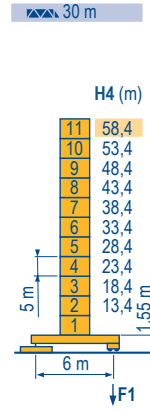
F2 ● 227 t

■ 360 t

F3 ● 153 t

■ 292 t

▲ 104 t



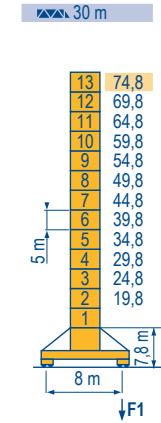
H4 (m)	H3 (m)	5 m	3,33 m
30 m	58,4	11	-
40 m	53,4	10	-
50 m	48,4	9	1
60 m	43,4	8	2

**ZX 6830**

F1 ● 147 t

■ 177 t

▲ 106 t



H (m)	5 m	3,33 m
30 m	13	-
40 m	12	-
50 m	10	2
60 m	9	2

**Y 800 A**

F1 ● 160 t

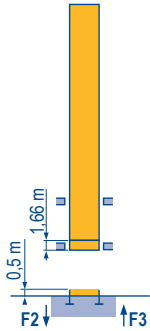
■ 202 t

▲ 138 t

**ZX 6830**

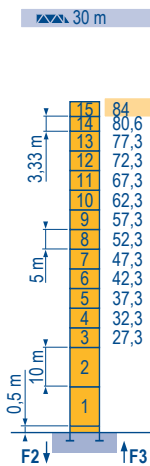


$\square$  2,45 m  
 $\square$  30 m  $\Rightarrow$  60 m



**B 800 B**

i



H (m)	10 m	5 m	3,33 m
30 m	84	2	11
40 m	80,6	2	11
50 m	75,6	2	10
60 m	70,6	2	9

**P 850 A**

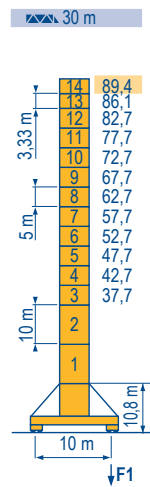
F2 ● 274 t

■ 505 t

F3 ● 184 t

■ 423 t

▲ 120 t



H (m)	10 m	5 m	3,33 m
30 m	89,4	2	10
40 m	86,1	2	10
50 m	82,7	2	10
60 m	79,4	2	8

**J 850 A**

F1 ● 172 t

■ 252 t

▲ 173 t

**MR 415 H24**



**F**

Réactions en service

Réactions hors service

A vide sans lest (ni train de transport) avec flèche et hauteur maximum.

Nous consulter

**D**

Reaktionskräfte in Betrieb

Reaktionskräfte außer Betrieb

Ohne Last, Ballast (und Transportachse), mit Maximalausleger und Maximalhöhe.

Auf Anfrage

**GB**

Reactions in service

Reactions out of service

Without load, ballast (or transport axles), with maximum jib and maximum height.

Consult us

**E**

Reacciones en servicio

Reacciones fuera de servicio

Sin carga, sin lastre, (ni tren de transporte), flecha y altura máxima.

Consultarnos

**I**

Reazioni in servizio

Reazioni fuori servizio

A vuoto, senza zavorra (ne assali di trasporto) con braccio massimo e altezza massima.

Consultateci

**P**

Reações em serviço

Reações fora de serviço

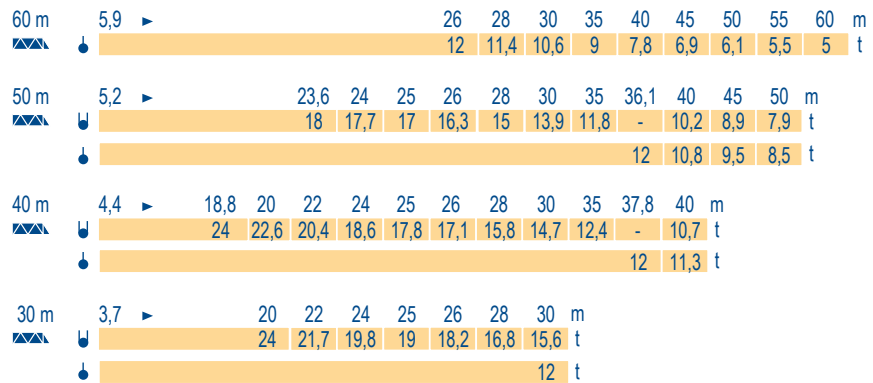
Sem carga (nem trem de transporte)- sem lastro com lança e altura máximas.

Consultar-nos



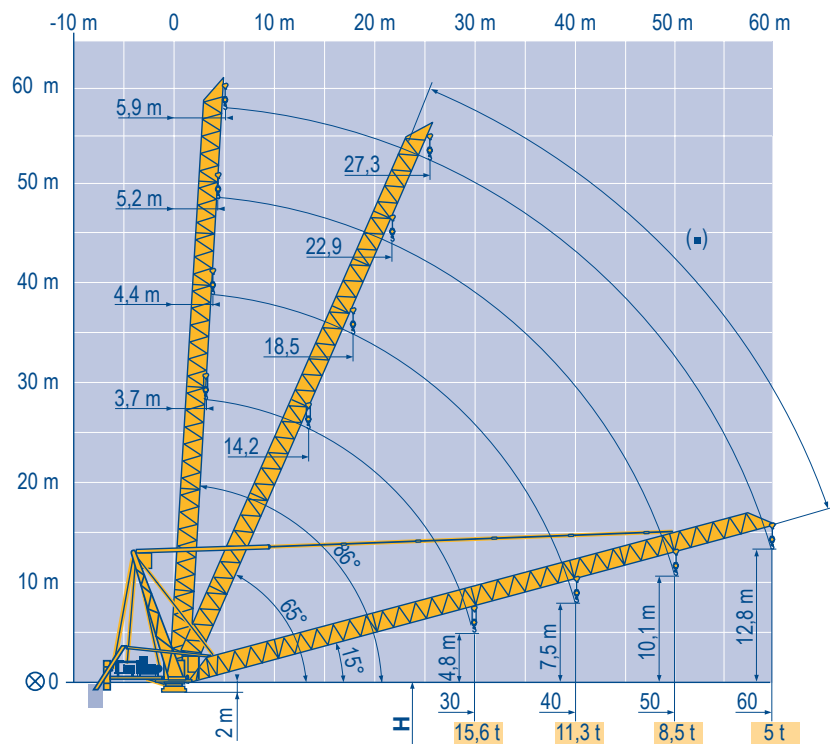
Courbes de charges  
 Lastkurven  
 Load diagrams  
 Curvas de cargas  
 Curve di carico  
 Curva de cargas

MAE 1



Flèche relevée  
 Ausleger in Steilstellung  
 Luffing jib  
 Flecha izada  
 Braccio impennato  
 Lança inclinada

MAE 1



MR 415 H24



**F**  
 Axe articulation flèche  
 Position girouette

**D**  
 Ausleger-gelenkachse  
 Windfreistellung

**GB**  
 Jib hinge shaft  
 Weathervaning position

**E**  
 Eje articulación de flecha  
 Posición eleta

**I**  
 Asse cerniera braccio  
 Libera rotazione

**P**  
 Eixo de articulação da lança  
 Posição em catavento

Mécanismes  
Antriebe  
Mechanisms  
Mecanismos  
Meccanismi  
Mecanismos

MAE 4

MR 415 H24 - 50 Hz			↓				U				ch - PS hp	kW		
	180 LBR 120 L 580	m/min	5,3/53	8,4/84	13,5/135	21,4/214	2,6/26	4,2/42	6,7/67	10,7/107	180	132	580 m	
		t	12	7,3	4,3	2,35	24	15	8,9	5				
	124 VBR	tr/min U/min - rpm	1 min 31 s										125	90
		R - 8,8	m/min	0 → 0,67										2 x 6
	Y 800 A RT584 A1 - 2V	m/min	13,5 - 27										8 x 7	8 x 5,2
		J 850 A												
	ZX 6830 RT 664 A2B - 2V	m/min	16 - 32										6 x 7	6 x 5,2
		CEI 38  IEC 38		400 V (+6% -10%)		kVA		300 kVA						

MR 415 H24 - 60 Hz			↓				U				ch - PS hp	kW		
	215 LBR 120 L 580	m/min	6,3/63	10/100	16/162	26/256	3,1/31	5/50	8/81	13/128	215	158	580 m	
		t	12	7,3	4,3	2,35	24	15	8,9	5				
	150 VBR	tr/min U/min - rpm	1 min 16 s										148	108
		R - 10,5	m/min	0 → 0,8										2 x 7,2
	Y 800 A RT584 A1 - 2V	m/min	16 - 32										8 x 8,4	8 x 6,2
		J 850 A												
	ZX 6830 RT 664 A2B - 2V	m/min	19 - 38										6 x 8,4	6 x 6,2
		CEI 38  IEC 38		480 V (+6% -10%)		kVA		350 kVA						

F

Levage  
Relevage  
Orientation  
Translation

D

Heben  
Ausleger-Einziehen  
Schwenken  
Kranfahren

GB

Hoisting  
Luffing  
Slewing  
Travelling

E

Elevación  
Elevación de flecha  
Orientación  
Traslación

I

Sollevamento  
Brandeggio  
Rotazione  
Traslazione

P

Elevação  
Inclinação da lança  
Rotação  
Translação



Document commercial non contractuel. Pour toute information technique se référer à la notice correspondante.

Unverbindliches Vertriebsdokument. Für technische Informationen, siehe die entsprechenden Anweisungen.

This commercial document is not legally binding. For any technical information, please refer to the corresponding instructions.

Documento comercial no contractuel. Para cualquier información técnica, ver la noticia correspondiente.

Documento commerciale non vincolante, per tutte le informazioni tecniche fare riferimento al catalogo istruzioni.

Documento comercial não contratual. Para qualquer informação técnica complementar consultar as respectivas instruções.

**Manitowoc**  
Crane CARE

**POTAIN**   
Manitowoc Crane Group



Americas

Tel : +1 888 479 7278  
Tel : +1 717 593 2000

Europe - Middle East - Africa

Tel : +33 (0) 4 72 81 50 00  
Tel : +44 (0) 191 522 2000

Asia - Pacific

Tel : +65 6264 1188  
Fax : +65 6862 4040

www.manitowoccrane.com

18, rue de Charbonnières - B.R.173  
69132 ECULLY Cedex - France

Tel. : +33 (0) 4 72 18 20 20  
Fax. : +33 (0) 4 72 18 20 00  
www.manitowoccrane.com

**MR 415 H24**

Code C-91985-99\_Réf. 2003 49 MAE 5

Copyright.Reproduction interdite © POTAIN 2003

Réalisation Sedoc